



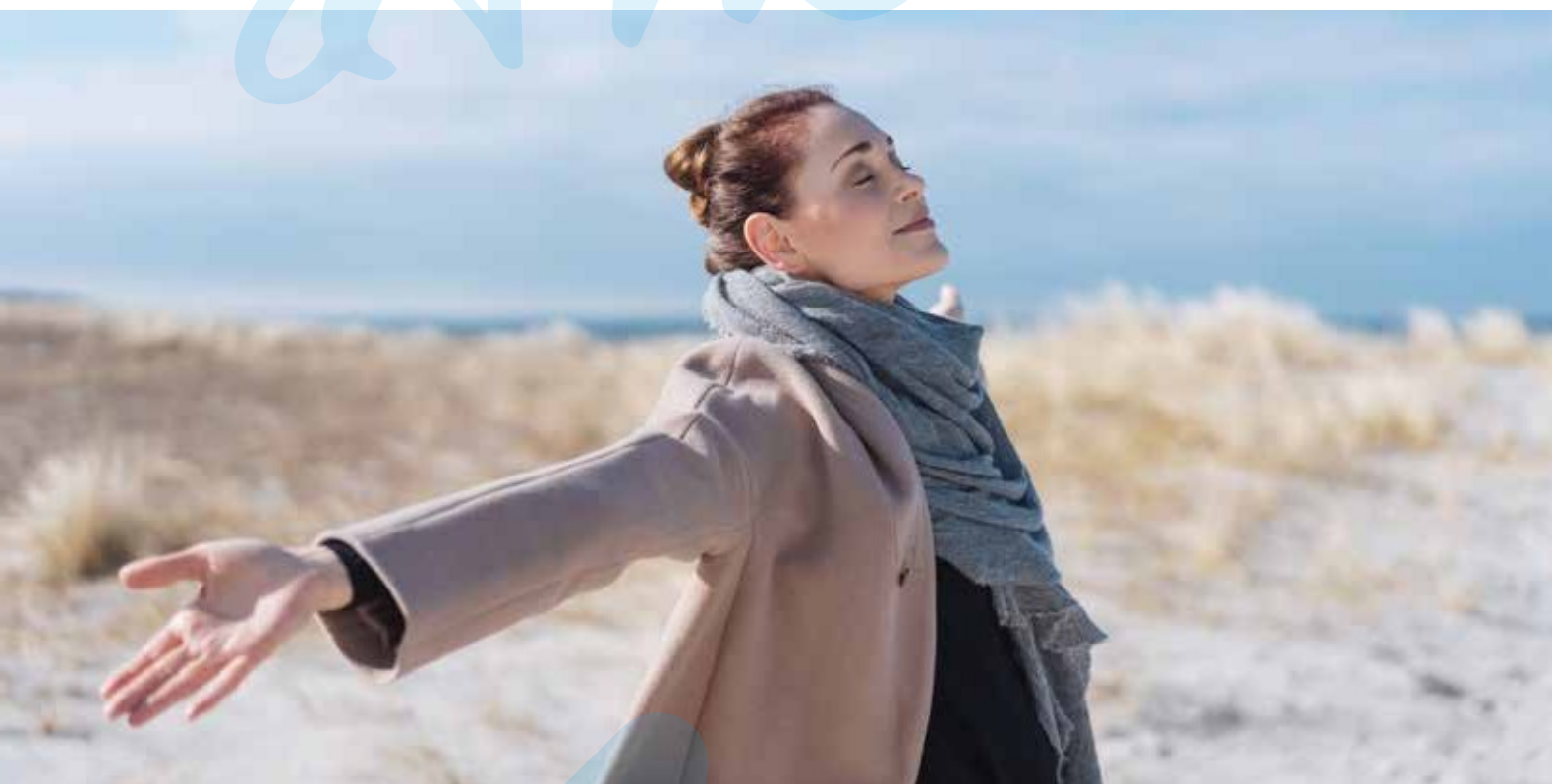
AVITANA®

PLASMA-TECHNOLOGIE



PRODUKT
KATALOG **23|24**

atme!



Breathe in the energy of life.
With every breath you feel it more....
... life.

PROLOG

AVITANA - Recirculating air for the environment

Breathe in, breathe out. With 12 to 18 breaths per minute, we supply our body with oxygen - this corresponds to an average breathing volume of 8 litres. Air is our "elixir of life"!

Nowadays, people spend a large part of their lives indoors. It is therefore all the more important that the indoor air is of good quality so that we feel comfortable and stay healthy.

Avitana GmbH, based in Herford in eastern Westphalia, develops and produces plasma filters "Made in Germany" for clean and healthy air in the kitchen, living room and office. True to the motto "circulating air for the environment", the plasma filters demonstrably clean the room air of all kinds of odours. And many bacteria, pollen and viruses are also eliminated by the filters. In this way, we make an important contribution to a good indoor climate.

In our current catalogue you will find all the important information about our **aira®** plasma filter systems. Let us inspire you! Your

AVITANA team





CONTENTS

| | |
|---|-----------|
| aira® PLASMA FILTER | 6 |
| aira® RONDO | 10 |
| aira® QUADRO | 14 |
| aira® QUADRO L | 16 |
| aira® QUADRO slimline | 18 |
| aira® QUADRO L slimline | 19 |
| aira® PLANO | 20 |
| aira® PRODUCT INFO | 24 |
| aira® RONDO | 24 |
| aira® QUADRO | 34 |
| aira® QUADRO L | 35 |
| aira® QUADRO slimline | 36 |
| aira® QUADRO L slimline | 37 |
| aira® PLANO | 38 |
| aira® ASSEMBLY INSTRUCTIONS | 40 |
| aira® RONDO | 40 |
| aira® QUADRO + QUADRO L | 43 |
| aira® QUADRO slimline + QUADRO L slimline | 44 |
| aira® PLANO | 45 |
| Assembly instructions | 46 |

| | |
|---|-----------|
| aira® ACCESSORIES | 50 |
| aira® RONDO | 50 |
| aira® QUADRO | 52 |
| aira® QUADRO slimline | 55 |
| aira® PLANO | 57 |
| Kitchen planning programmes | 59 |
| CERTIFICATES | 60 |
| MARKETING SALES PROMOTION | 64 |
| Which filter do I need? An orientation guide | 68 |
| CONTACTS | 69 |
| AVITANA | 69 |
| Trade Representation Germany | 70 |
| Trade representation worldwide | 71 |
| Room ventilator <small>aira®</small> vita | 72 |



Plasma filter for cooker bonnets

maintenance-free - environmentally friendly - energy-saving

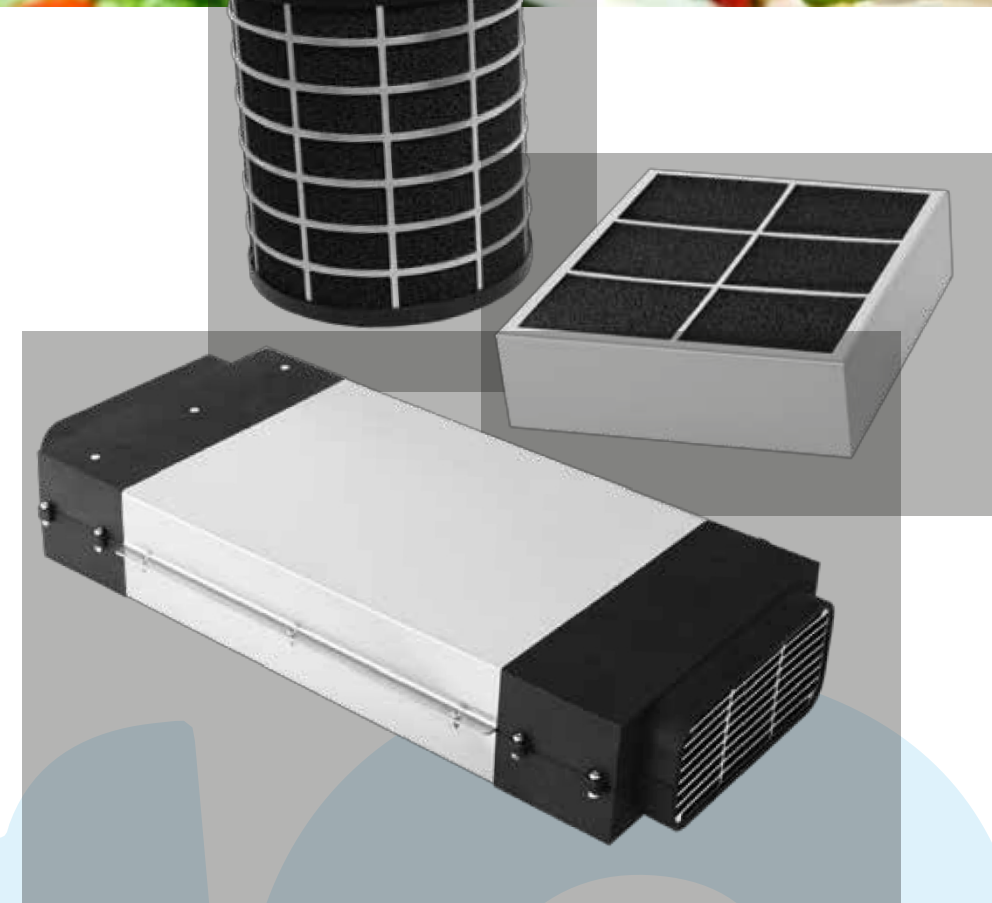
aira® plasma filter systems are developed to improve indoor air quality and are designed for all common extractor bonnets and trough fans. All components are environmentally friendly and recyclable or made from recycled material.

aira® plasma filters clean the room air of all odours by up to 98 %. In addition, viruses, pollen, bacteria and allergenic substances, including tobacco odours, are eliminated. No ozone is released in the process. The effectiveness and health compatibility is proven by scientific tests and certified four times (VDE/ IUTA/ INP/ OI- fasense).

aira® plasma filter systems protect the environment by using significantly less energy than exhaust air systems, because room air that has already been heated (or expensively cooled in summer) is not blown out of the house and remains in the flat.

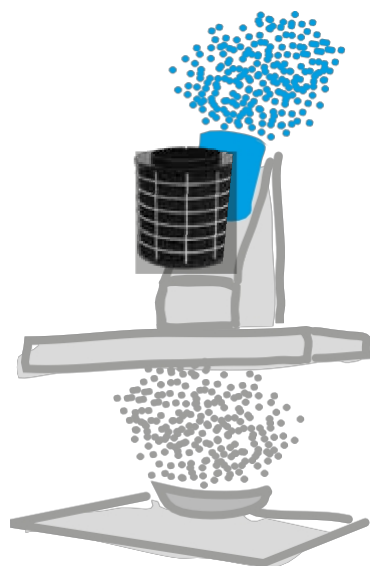
Our product groups:

- airt® **RONDO** for wall, sloping and island bonnets
- airt® **QUADRO** for trough fans
- airt® **PLANO** for sloping and flat screen bonnets



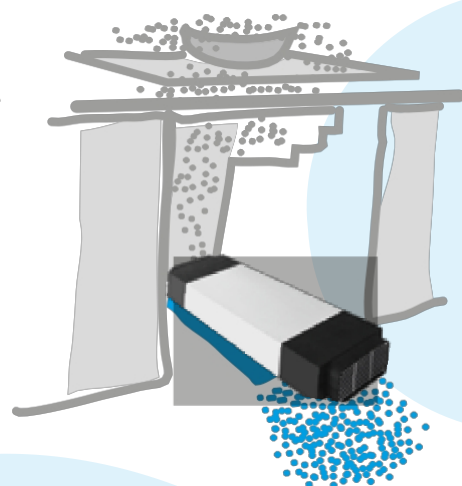
aira®
RONDO

for wall, sloping and
island bonnets



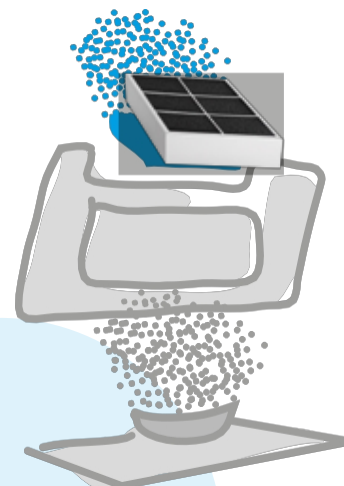
aira®
QUADRO

for trough fans



aira®
PLANO

for inclined and
flat screen bonnets



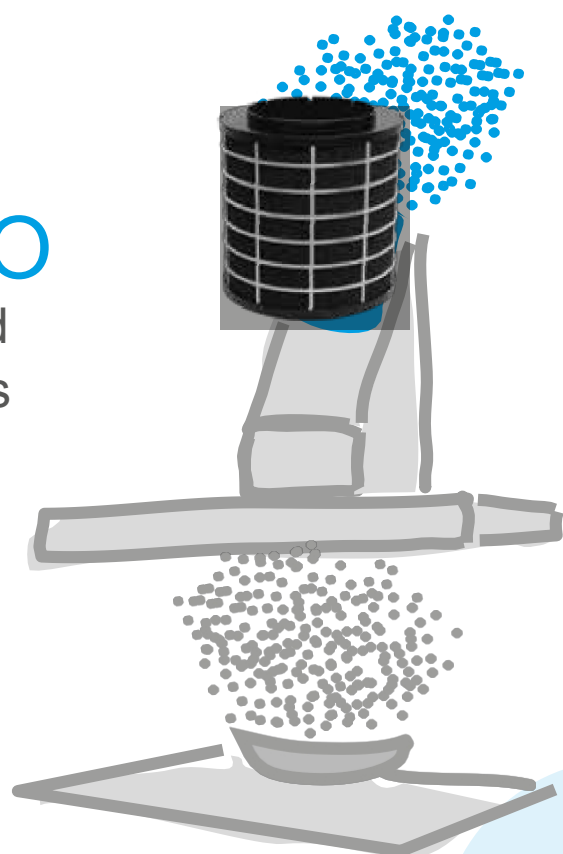
Many good reasons

- ✓ **aira® filters - a good decision**
 - The right plasma filter for every cooker bonnet
 - Output levels from 350 to 1,200 cbm/h
 - Customised developments and special requests possible
- ✓ **User-friendly**
 - Easy and quick to assemble (plug and play)
 - Retrofittable for existing cooker bonnets
 - Low weight and dimensions
 - Works horizontally and vertically
 - Extensive accessories
- ✓ **Improving the quality of living and life**
 - Eliminates up to 98% of all odours
 - Elimination of viruses, pollen and other allergy-causing substances, including tobacco smoke
 - INP Certificate of the Leibniz Institute for Plasma Research and Technology e.V. "Ozone-free".
- ✓ **Energy efficiency**
 - No maintenance necessary
 - Low energy consumption
 - Automatic on and off
 - Self-cleaning system of the filter
- ✓ **Cost saving**
 - No need to change the filters
 - No exhaust air system to the outside necessary
- ✓ **Tested safety**
 - VDE certificate for airo® RONDO and airo® QUADRO models (including ozone test)
 - IUTA Certificate (Ozone Test Energy and Environment Institute, Duisburg)
 - olfasense certificate for airo® RONDO filters for odour reduction
- ✓ **Quality**
 - Made in Germany
 - 5 years warranty
 - High-quality filter material (the carbon particles of a single filter would make the surface of a football field if rolled out)

atme!

aira® RONDO

for wall, sloping and
island bonnets



aira® **RONDO** is characterised by its high effectiveness and efficiency. Our successful model among the plasma filter systems convinces with its low weight and compatible dimensions. The filter is easy and quick to install and can be retrofitted to existing extractor bonnets.

This model is available in three different diameters (150/180/210 mm) for motor connection openings of 120 or 150 mm. Furthermore, airo® **RONDO** fits extractor bonnets with flue dimensions of 200 x 200 mm and 250 x 250 mm, each with three power levels.

Suitable accessories for the installation and operation of the plasma filter are included in the scope of delivery.

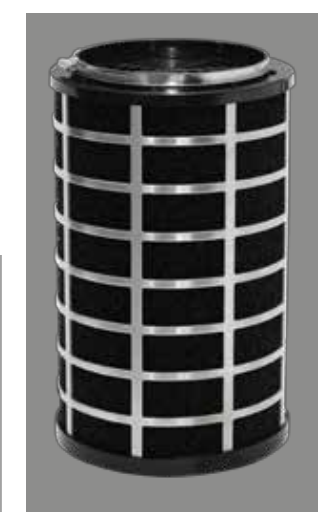
aira® RONDO

Outer diameter 150 mm
350 m³ / h | 550 m³ / h | 650 m³ / h

RONDO 350
Item no.
8113
s. Page 24



RONDO 550
Item no. 8115
s. Page 25



RONDO 650
Item no. 8116
s. Page 26



innovative Technologie

atme!

aira® RONDO RONDO

Outer diameter 180 mm
400 m³ / h | 600 m³ / h | 800 m³ / h



RONDO 400
Item no.
8418
s. Page 27



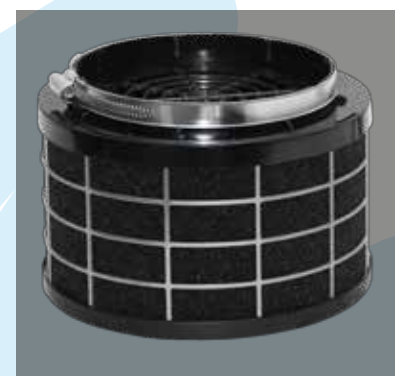
RONDO 600
Item no.
8618
s. Page 28



RONDO 800
Item no.
8818
s. Page 29

aira®

Outer diameter 210 mm 500 m³
/ h | 800 m³ / h | 1000 m³ / h



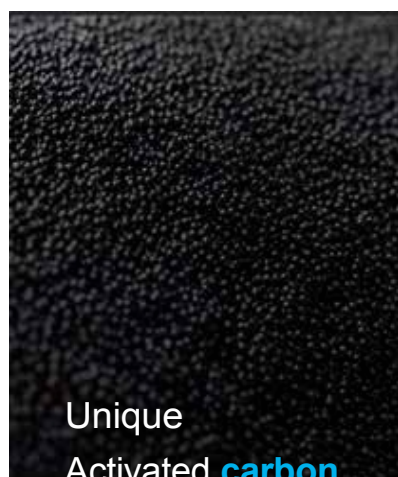
RONDO 500
Item no.
8521
s. Page 30



RONDO 800
Item no. 8821
s. Page 31



RONDO 1000
Item no. 8121
s. Page 32



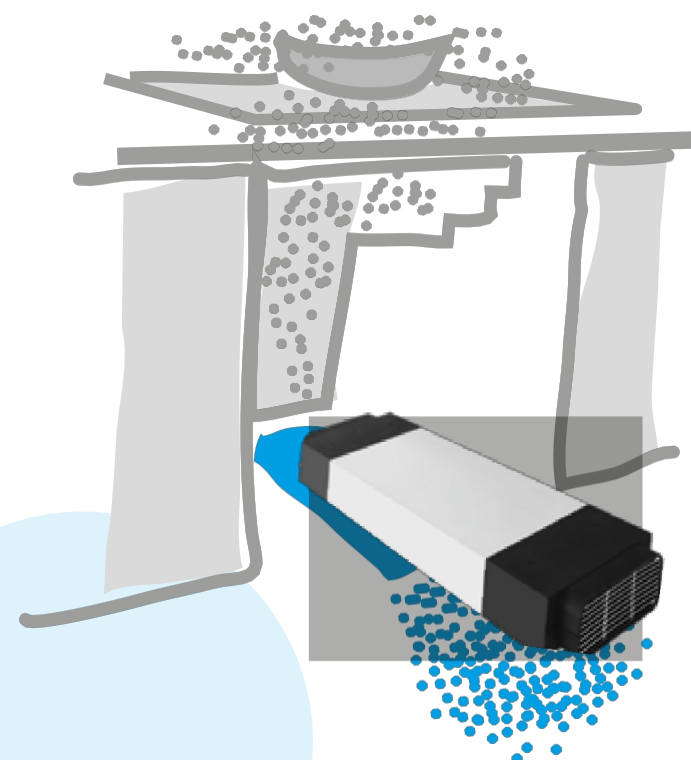
Unique
Activated carbon





aira® QUADRO

for trough fans



aira® **QUADRO** is integrated into the base cabinet for use in cooktop trough ventilators, but is also ideal for many other applications. This filter system is recommended for combined cooktop trough ventilators and forced ventilation systems in suspended ceilings.

aira® **QUADRO** can be mounted in almost any position (crosswise, upright, etc.). Thus, airo® **QUADRO** stands for the highest technical performance standard.

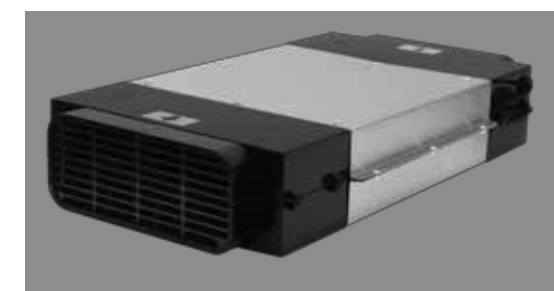
aira® QUADRO

Dimensions 325 x 280 x
92 mm
400 m³ / h



QUADRO 400
Item no. 8740
s. Page 34

Dimensions 465 x 280 x 92 mm
800 m³ / h



QUADRO 800
Item no. 8780
s. Page 34

Dimensions 575 x 280 x
92 mm
1200 m³ / h



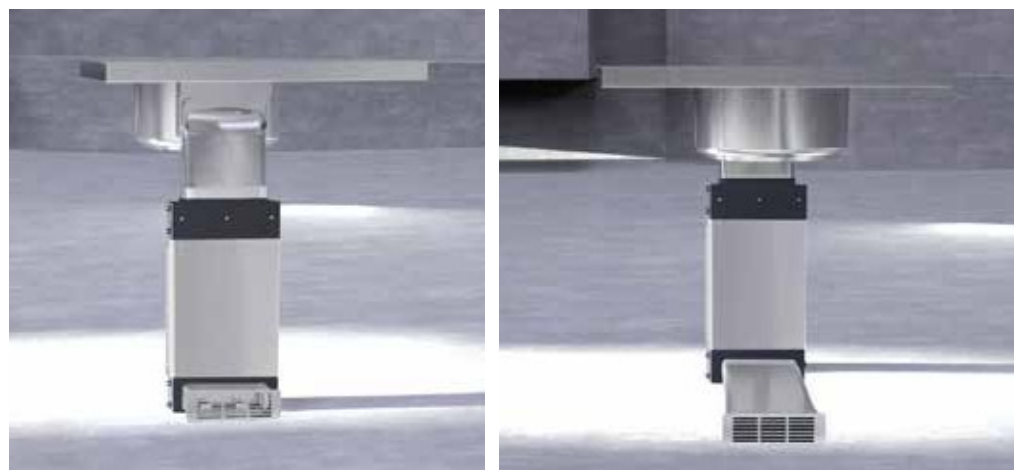
QUADRO 1200
Item no. 8712
s. Page 34



aira® QUADRO L

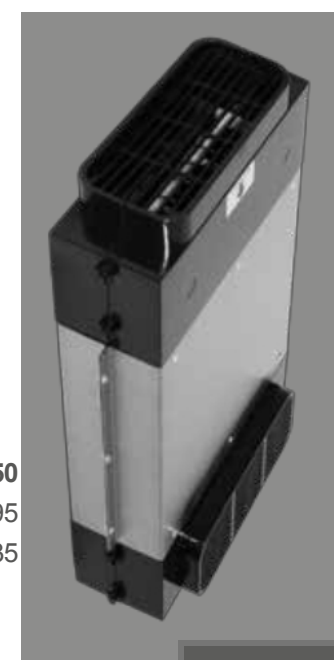
Like the airta® QUADRO, the airta® QUADRO L is integrated into the base for use in hob trough ventilators and is ideal for other applications due to its "vertical installation". This filter system is recommended for combined hob trough ventilators and forced ventilation systems in suspended ceilings. Due to its L-shape, airta® QUADRO L can be installed in almost any position (transverse, upright, etc.).

Dimensions 465 x 280 x 92
mm 750 m³ / h



QUADRO L 750
Item no. 8775
s. Page 35

Dimensions 575 x 280 x 92
mm 950 m³ / h



QUADRO L 950
Item no. 8795
s. Page 35

atme!



slimline

aira® **QUADRO slimline** - like the aira® **QUADRO** - is suitable for use in hob trough fans standing upright and lying down in the plinth. The **slimline** variants are particularly flat and also fit **6 cm plinths**.

Dimensions 390 x 280 x 58 mm
x 280 x 58 mm 600 m³/h



QUADRO slimline 600
Item no. 8762
s. Page 36

Dimensions 480
800 m³/h



QUADRO slimline 800
Item no. 8782
s. Page 36



L slimline

aira® **QUADRO L slimline** is - like the aira® **QUADRO** - suitable for use in hob trough vents in the plinth. The **L slimline** variants are particularly flat and also fit **6 cm plinths**. Thanks to their L shape, they can be mounted in almost any position.

Dimensions 390 x 280 x 58 mm
600 m³/h



QUADRO L slimline 600
Item no. 8761
s. Page 37

Dimensions 480 x 280 x 58 mm
800 m³/h



QUADRO L slimline 800
Item no. 8781
s. Page 37



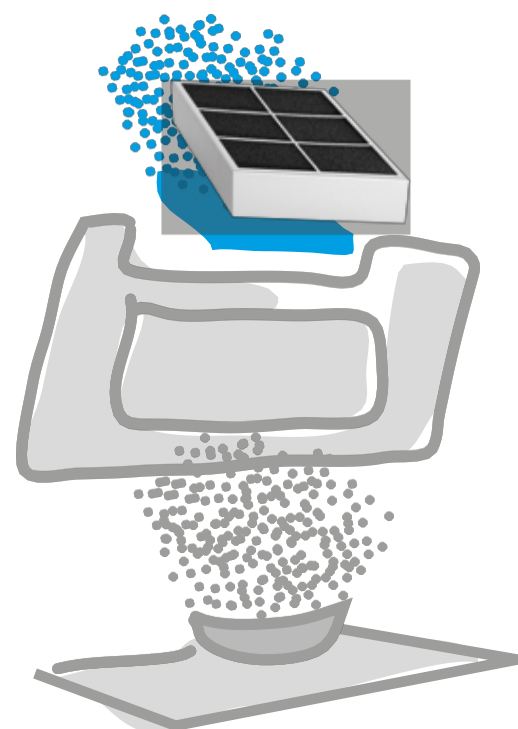
QUADRO L / QUADRO L



QUADRO slimline
Installation possible between two rear walls

aira® PLANO

for inclined and
flat screen bonnets



The airta® **PLANO plasma filter** covers a wide range of other applications in the professional sector. Like the other plasma filters from AVITANA, the filter is easy and quick to install and can be retrofitted to existing extractor bonnets so that nothing stands in the way of fresh air.

The filter switches on automatically at 1m/sec. air flow via an integrated electronic sensor. air flow, the filter switches on automatically.

Through the ionisation process, our filter eliminates up to 98% of all odours. The elimination of viruses, pollen, bacteria and allergenic substances, including tobacco smoke, also takes place, releasing no ozone to the outside.

aira® PLANO

Dimensions 210 x 250 x 87 mm

400 m³ / h



PLANO 400 Ø 150 mm
Item no. 8940
s. Page 38



PLANO 400 Ø 120 mm
Item no. 8948
s. Page 38



aira® PLANO

Dimensions 210 x 250 x 87 mm

500 m³ / h



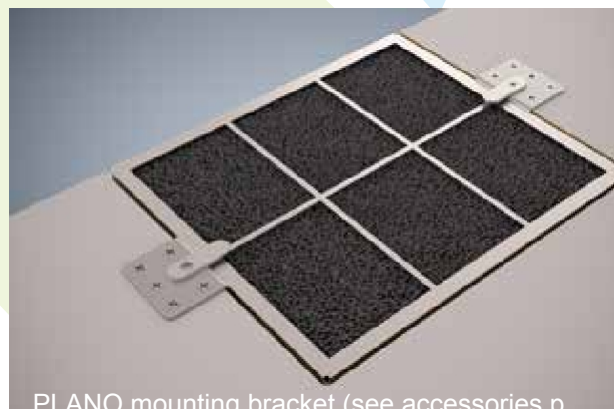
PLANO 500 Ø 150 mm
Item no. 8950_white
s. Page 38



PLANO 500 Ø 120 mm
Item no. 8958_white
s. Page 38



PLANO for flat screen hoods

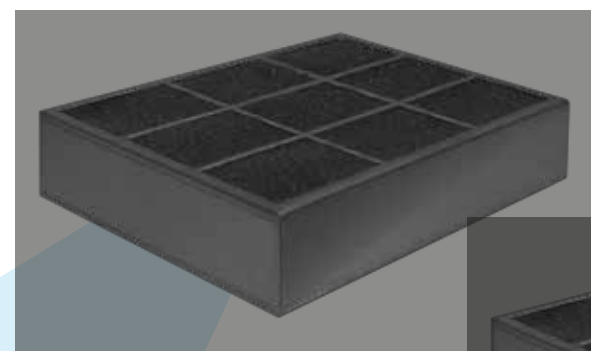


PLANO mounting bracket (see accessories p.

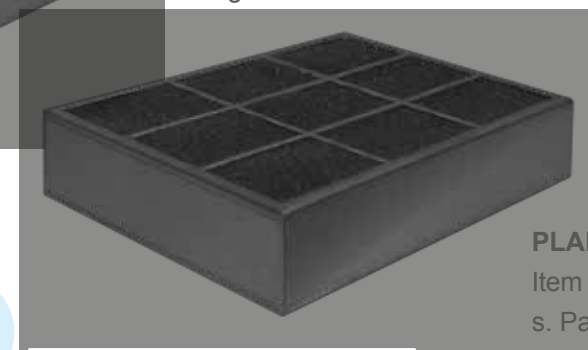
aira® PLANO

Dimensions 210 x 250 x 87 mm

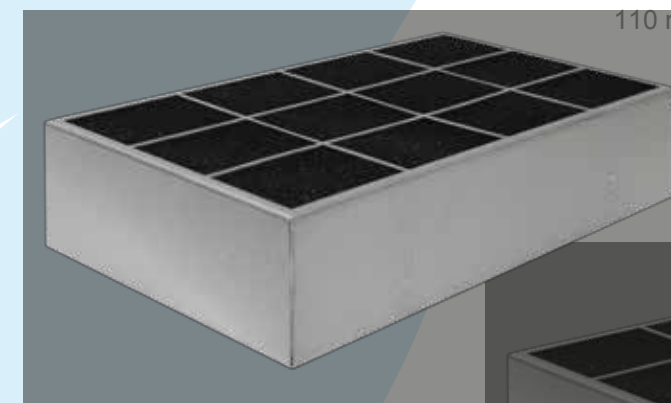
600 m³ / h



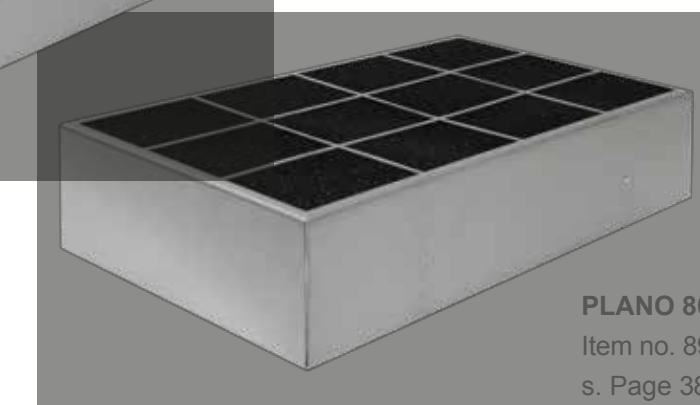
PLANO 600 Ø 150 mm
Item no. 8960_black
s. Page 38



PLANO 600 Ø 120 mm
Item no. 8968_black
s. Page 38



PLANO 800 Ø 150 mm
Item no. 8980
s. Page 38



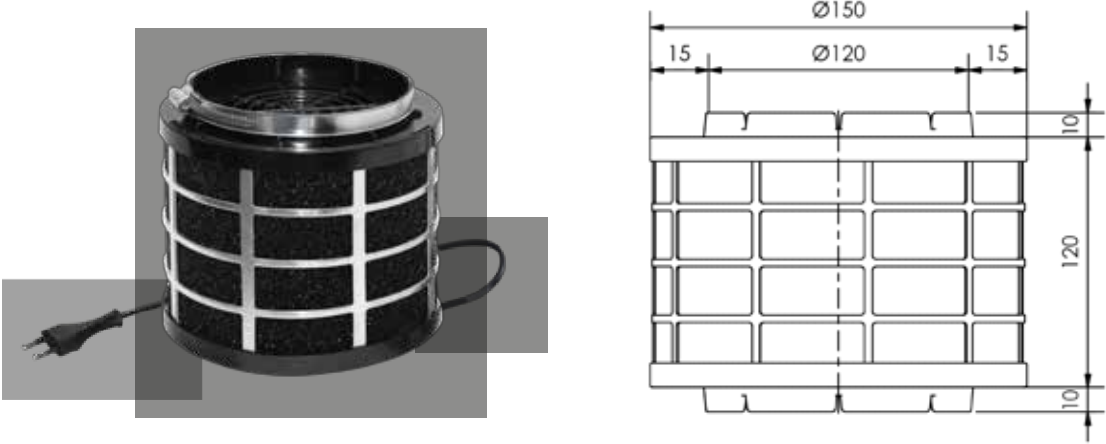
PLANO 800 Ø 120 mm
Item no. 8988
s. Page 38

The aira® **PLANO standard version** is in stainless steel, the filter is also available in black and white powder-coated.



aira
RONDO | Product Info

Included in delivery: Art. no. 7547 (adapter | reducer, MA150/120, eccentric)
7020_180 (hose clip Ø 180), 7001 (Euromulti plug 2+1 = 1 Schuko, 2 Euro plugs)



RONDO 350 | MA Ø 120 mm

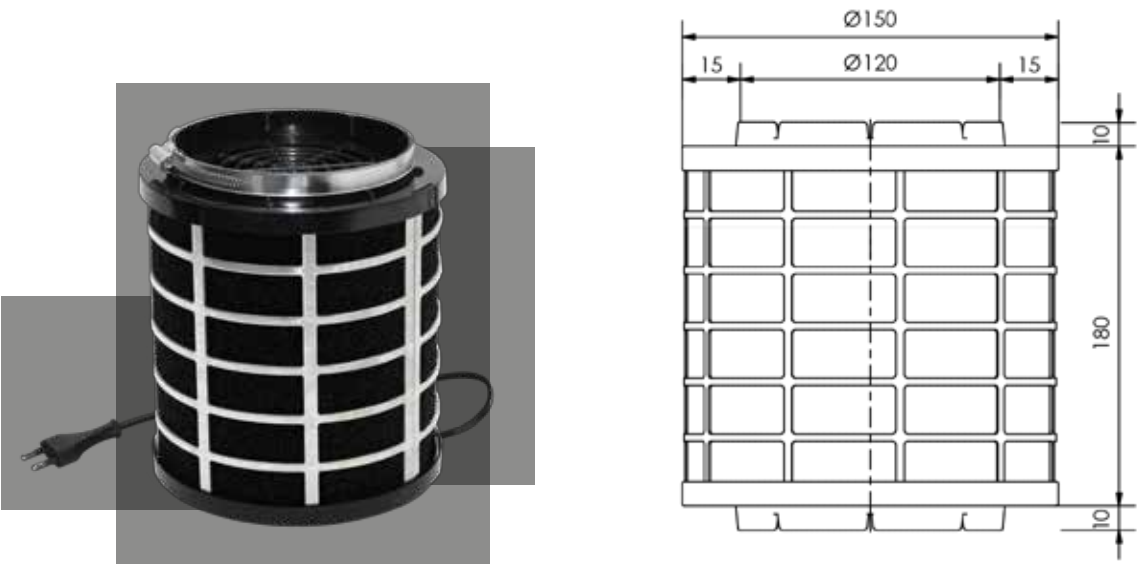
| | | | |
|--------------------|----------------|--------------|--------------------|
| Art. no. | 8113 | Weight VP | 0,6 kg |
| Dimensions | Ø 150 x 120 mm | dimension | 400 x 260 x 230 mm |
| Air flow rate | 350 m3/ h | VP unit | 1 piece Euro |
| Connection voltage | 210 - 250 Volt | Plug / Cable | /150 cm |
| Motor connection | Ø 120 mm | | |

Contact time / incident flow velocity: depending on degree of contamination 0.1-1 sec, 2 min / max. pressure difference: at 2 m/s incident flow, 100 Pa
Electrical operation: primary: 210-250 V, 50Hz | secondary: HS approx. 5 KV, 10 Watt Power consumption: max. 10 Watt, max. 3.65 KW p.a. | Standby consumption: max. 0.5 Watt Subject to technical changes!



aira
RONDO | Product Info

Included in delivery: Art. no. 7547 (adapter | reducer, MA150/120, eccentric)
7020_180 (hose clip Ø 180), 7001 (Euromulti plug 2+1 = 1 Schuko, 2 Euro plugs)



RONDO 550 | MA Ø 120 mm

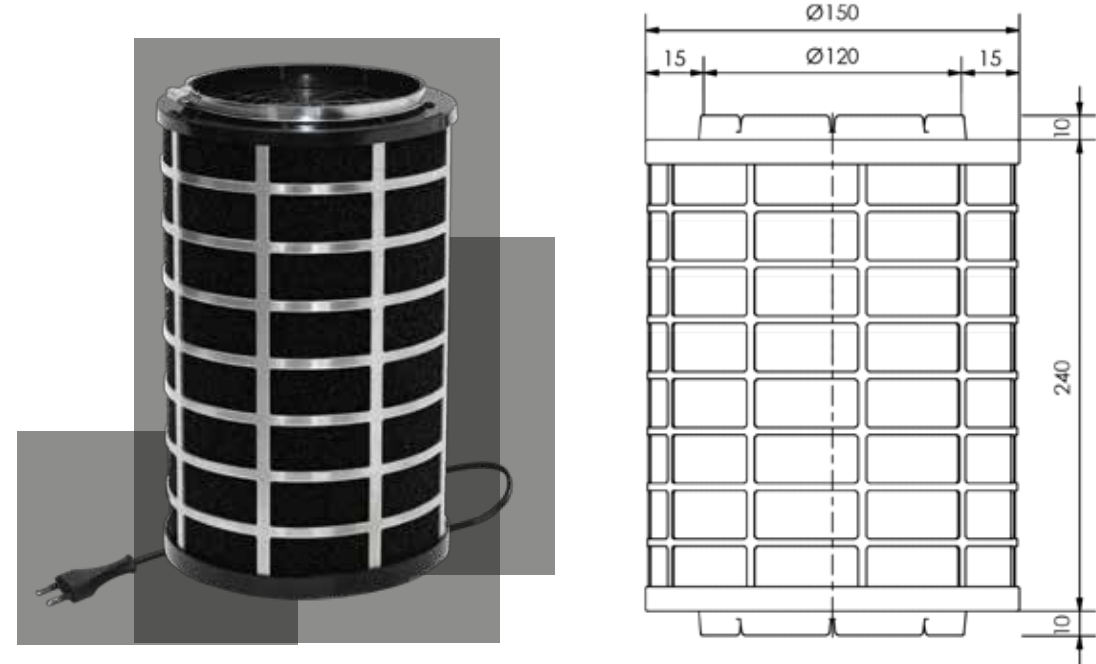
| | | | |
|--------------------|----------------|--------------|--------------------|
| Art. no. | 8115 | Weight VP | 0,8 kg |
| Dimensions | Ø 150 x 180 mm | dimension | 400 x 260 x 230 mm |
| Air flow rate | 550 m3/ h | VP unit | 1 piece Euro |
| Connection voltage | 210 - 250 Volt | Plug / Cable | /150 cm |
| Motor connection | Ø 120 mm | | |

Contact time / incident flow velocity: depending on degree of contamination 0.1-1 sec, 2 min / max. pressure difference: at 2 m/s incident flow, 100 Pa
Electrical operation: primary: 210-250 V, 50Hz | secondary: HS approx. 5 KV, 10 Watt Power consumption: max. 10 Watt, max. 3.65 KW p.a. | Standby consumption: max. 0.5 Watt Subject to technical changes!



aira®
RONDO | Product Info




Included in delivery: Art. no. 7547 (adapter | reducer, MA150/120, eccentric)
7020_180 (hose clip Ø 180), 7001 (Euromulti plug 2+1 = 1 Schuko, 2 Euro plugs)



RONDO 650 | MA Ø 120 mm

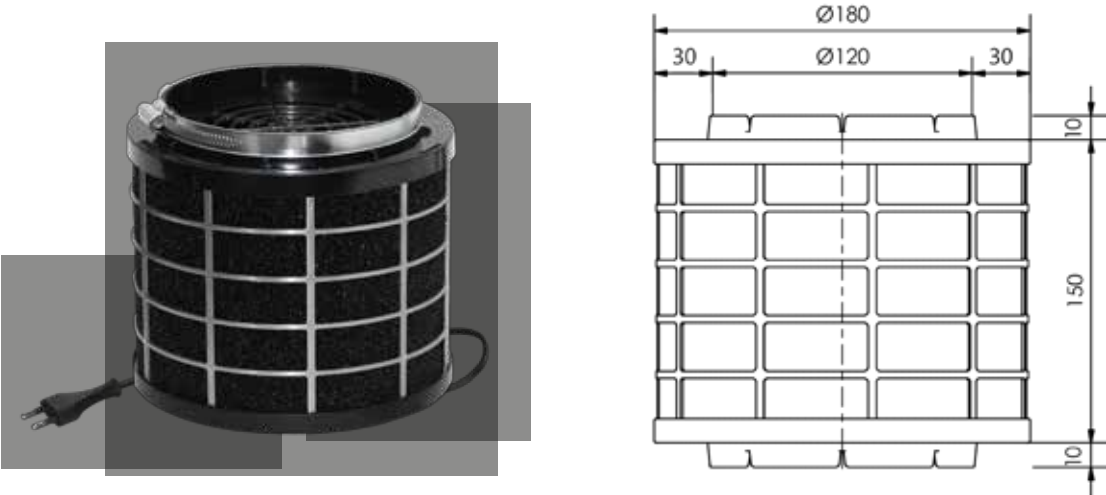
| | | | |
|--------------------|----------------|--------------|--------------------|
| Art. no. | 8116 | Weight VP | 1.0 kg |
| Dimensions | Ø 150 x 240 mm | dimension | 400 x 260 x 230 mm |
| Air flow rate | 650 m3/ h | VP unit | 1 piece Euro |
| Connection voltage | 210 - 250 Volt | Plug / Cable | /150 cm |
| Motor connection | Ø 120 mm | | |

Contact time / incident flow velocity: depending on degree of contamination 0.1-1 sec, 2 min / max. pressure difference: at 2 m/s incident flow, 100 Pa
Electrical operation: primary: 210-250 V, 50Hz | secondary: HS approx. 5 KV, 10 Watt Power consumption: max. 10 Watt, max. 3.65 KW p.a. | Standby consumption: max. 0.5 Watt Subject to technical changes!



aira®
RONDO | Product Info




Included in delivery: Art. no. 7547 (adapter | reducer, MA150/120, eccentric)
7020_180 (hose clip Ø 180), 7001 (Euromulti plug 2+1 = 1 Schuko, 2 Euro plugs)



RONDO 400 | MA Ø 120 mm

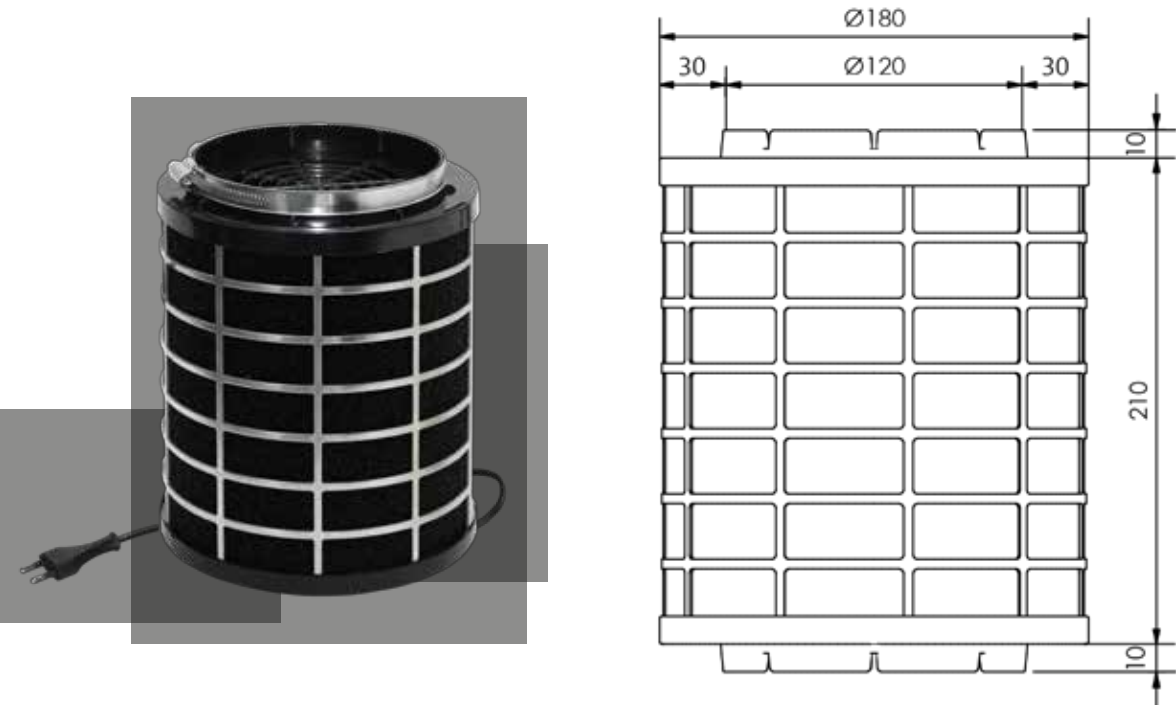
| | | | |
|--------------------|----------------|--------------|--------------------|
| Art. no. | 8418 | Weight VP | 1,12 kg |
| Dimensions | Ø 180 x 150 mm | dimension | 400 x 260 x 230 mm |
| Air flow rate | 400 m3/ h | VP unit | 1 piece Euro |
| Connection voltage | 210 - 250 Volt | Plug / Cable | /150 cm |
| Motor connection | Ø 120 mm | | |

Contact time / incident flow velocity: depending on degree of contamination 0.1-1 sec, 2 min / max. pressure difference: at 2 m/s incident flow, 100 Pa
Electrical operation: primary: 210-250 V, 50Hz | secondary: HS approx. 5 KV, 10 Watt Power consumption: max. 10 Watt, max. 3.65 KW p.a. | Standby consumption: max. 0.5 Watt Subject to technical changes!



aira®
RONDO | Product Info




Included in delivery: Art. no. 7547 (adapter | reducer, MA150/120, eccentric)
7020_180 (hose clip Ø 180), 7001 (Euromulti plug 2+1 = 1 Schuko, 2 Euro plugs)



RONDO 600 | MA Ø 120 mm

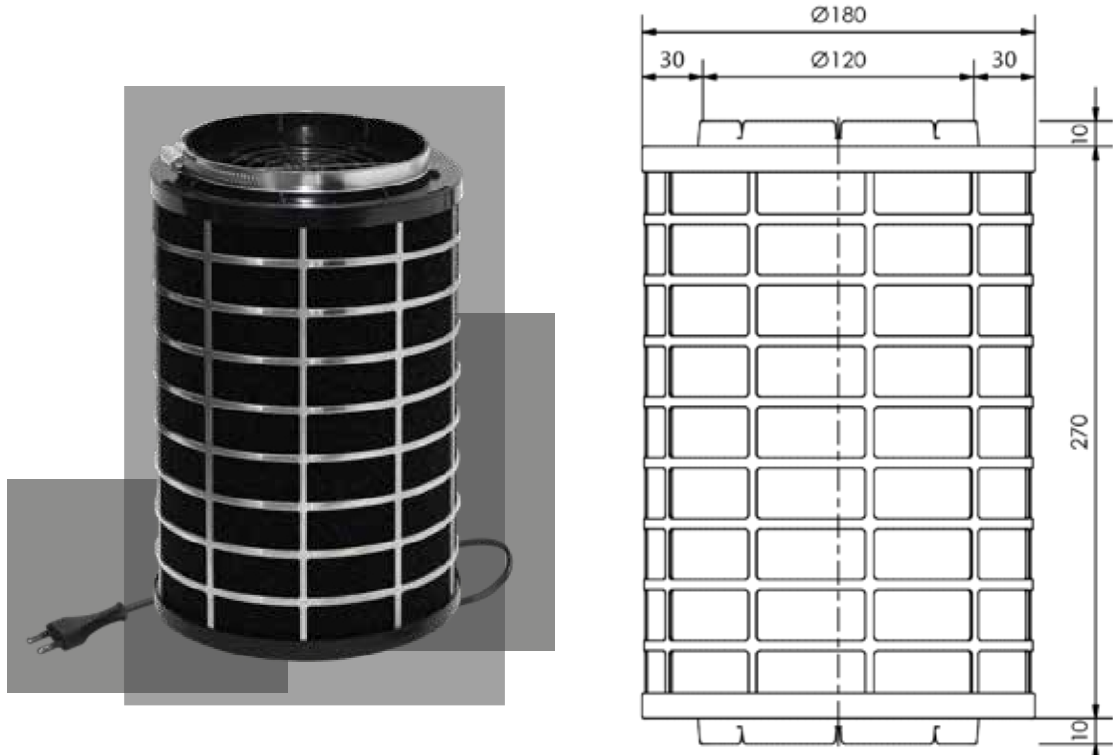
| | | | |
|--------------------|----------------|--------------|--------------------|
| Art. no. | 8618 | Weight VP | 1,56 kg |
| Dimensions | Ø 180 x 210 mm | dimension | 400 x 260 x 230 mm |
| Air flow rate | 600 m3/ h | VP unit | 1 piece Euro |
| Connection voltage | 210 - 250 Volt | Plug / Cable | /150 cm |
| Motor connection | Ø 120 mm | | |

Contact time / incident flow velocity: depending on degree of contamination 0.1-1 sec, 2 min / max. pressure difference: at 2 m/s incident flow, 100 Pa
Electrical operation: primary: 210-250 V, 50Hz | secondary: HS approx. 5 KV, 10 Watt Power consumption: max. 10 Watt, max. 3.65 KW p.a. | Standby consumption: max. 0.5 Watt Subject to technical changes!



aira®
RONDO | Product Info




Included in delivery: Art. no. 7547 (adapter | reducer, MA150/120, eccentric)
7020_180 (hose clip Ø 180), 7001 (Euromulti plug 2+1 = 1 Schuko, 2 Euro plugs)



RONDO 800 | MA Ø 120 mm

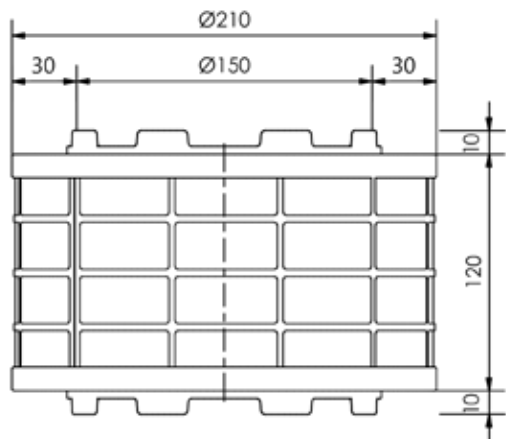
| | | | |
|--------------------|----------------|--------------|--------------------|
| Art. no. | 8818 | Weight VP | 1,76 kg |
| Dimensions | Ø 180 x 270 mm | dimension | 400 x 260 x 230 mm |
| Air flow rate | 800 m3/ h | VP unit | 1 piece Euro |
| Connection voltage | 210 - 250 Volt | Plug / Cable | /150 cm |
| Motor connection | Ø 120 mm | | |

Contact time / incident flow velocity: depending on degree of contamination 0.1-1 sec, 2 min / max. pressure difference: at 2 m/s incident flow, 100 Pa
Electrical operation: primary: 210-250 V, 50Hz | secondary: HS approx. 5 KV, 10 Watt Power consumption: max. 10 Watt, max. 3.65 KW p.a. | Standby consumption: max. 0.5 Watt Subject to technical changes!



aira® RONDO | Product Info

Included in delivery: Art. no. 7550 (adapter, MA150/150, eccentric)
7020_210 (hose clip Ø 210), 7001 (Euromulti plug 2+1 = 1 Schuko, 2 Euro plugs)



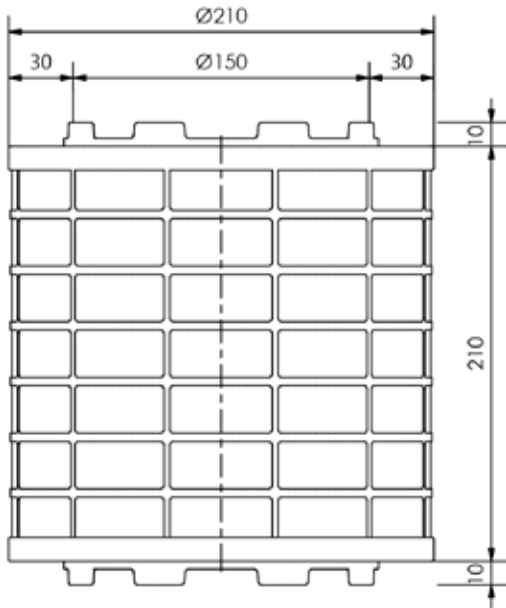
RONDO 500 | MA Ø 150 mm

| | | | |
|--------------------|----------------|--------------|--------------------|
| Art. no. | 8521 | Weight VP | 1,22 kg |
| Dimensions | Ø 210 x 120 mm | dimension | 400 x 260 x 230 mm |
| Air flow rate | 500 m3/ h | VP unit | 1 piece Euro |
| Connection voltage | 210 - 250 Volt | Plug / Cable | /150 cm |
| Motor connection | Ø 150 mm | | |

Contact time / incident flow velocity: depending on degree of contamination 0.1-1 sec, 2 min / max. pressure difference: at 2 m/s incident flow, 100 Pa
Electrical operation: primary: 210-250 V, 50Hz | secondary: HS approx. 5 KV, 10 Watt Power consumption: max. 10 Watt, max. 3.65 KW p.a. | Standby consumption: max. 0.5 Watt Subject to technical changes!

aira® RONDO | Product Info

Included in delivery: Art. no. 7550 (adapter, MA150/150, eccentric)
7020_210 (hose clip Ø 210), 7001 (Euromulti plug 2+1 = 1 Schuko, 2 Euro plugs)



RONDO 800 | MA Ø 150 mm

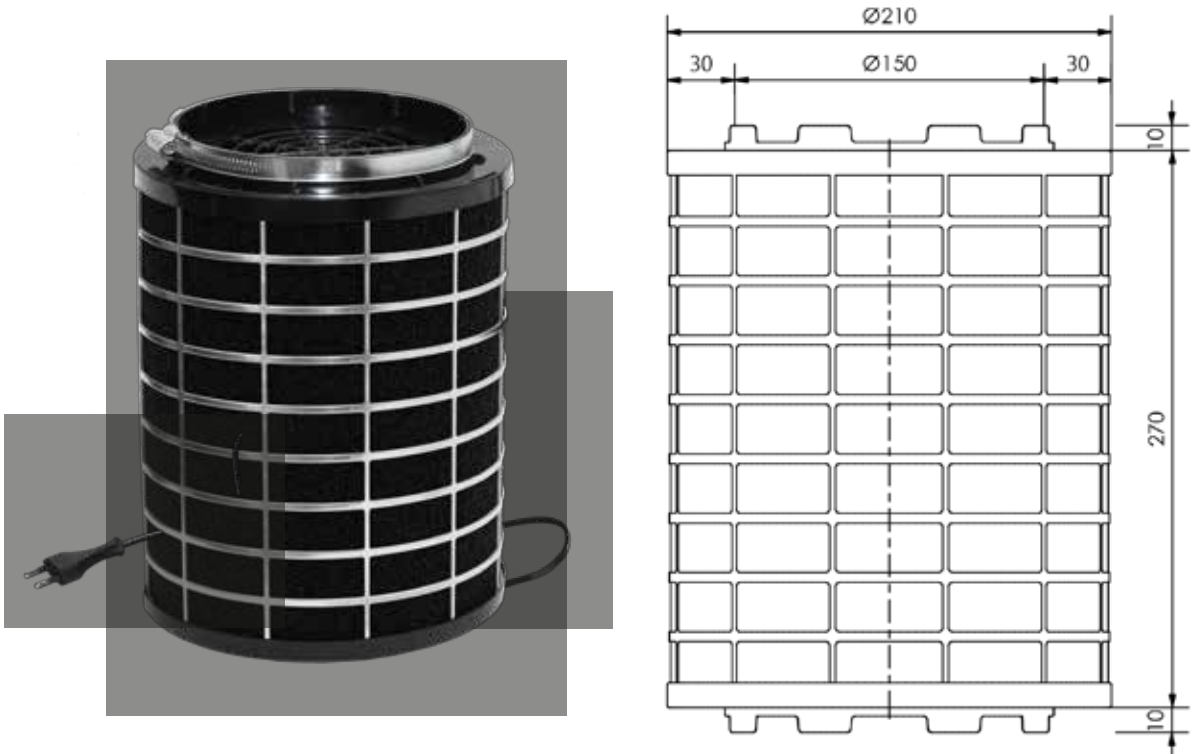
| | | | |
|--------------------|----------------|--------------|--------------------|
| Art. no. | 8821 | Weight VP | 1,66 kg |
| Dimensions | Ø 210 x 210 mm | dimension | 400 x 260 x 230 mm |
| Air flow rate | 800 m3/ h | VP unit | 1 piece |
| Connection voltage | 210 - 250 Volt | Plug / Cable | Euro /150 cm |
| Motor connection | Ø 150 mm | | |

Contact time / incident flow velocity: depending on degree of contamination 0.1-1 sec, 2 min / max. pressure difference: at 2 m/s incident flow, 100 Pa
Electrical operation: primary: 210-250 V, 50Hz | secondary: HS approx. 5 KV, 10 Watt Power consumption: max. 10 Watt, max. 3.65 KW p.a. | Standby consumption: max. 0.5 Watt Subject to technical changes!



aira
RONDO | Product Info

Included in delivery: Art. no. 7550 (adapter, MA150/150, eccentric)
7020_210 (hose clip Ø 210), 7001 (Euromulti plug 2+1 = 1 Schuko, 2 Euro plugs)



RONDO 1000 | MA Ø 150 mm

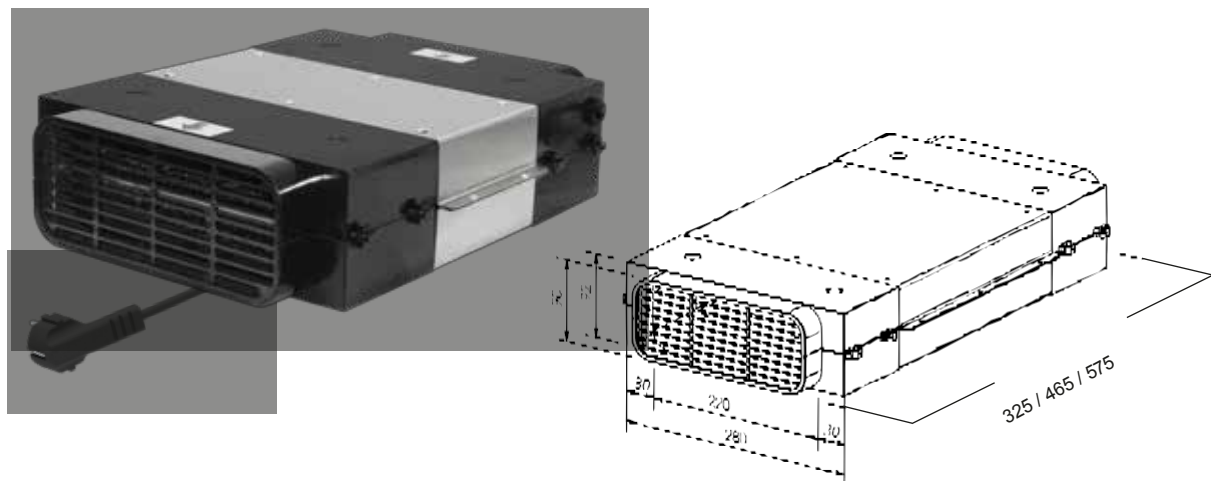
| | | | |
|--------------------|----------------|--------------|--------------------|
| Art. no. | 8121 | Weight VP | 2.0 kg |
| Dimensions | Ø 210 x 270 mm | dimension | 400 x 260 x 230 mm |
| Air flow rate | 1000 m3/ h | VP unit | 1 piece Euro |
| Connection voltage | 210 - 250 Volt | Plug / Cable | /150 cm |
| Motor connection | Ø 150 mm | | |

Contact time / incident flow velocity: depending on degree of contamination 0.1-1 sec, 2 min / max. pressure difference: at 2 m/s incident flow, 100 Pa
Electrical operation: primary: 210-250 V, 50Hz | secondary: HS approx. 5 KV, 10 Watt Power consumption: max. 10 Watt, max. 3.65 KW p.a. | Standby consumption: max. 0.5 Watt Subject to technical changes!

CE



aira®
QUADRO | Product
Info



QUADRO 400
MA 220 x 90 mm

QUADRO 800
MA 220 x 90 mm

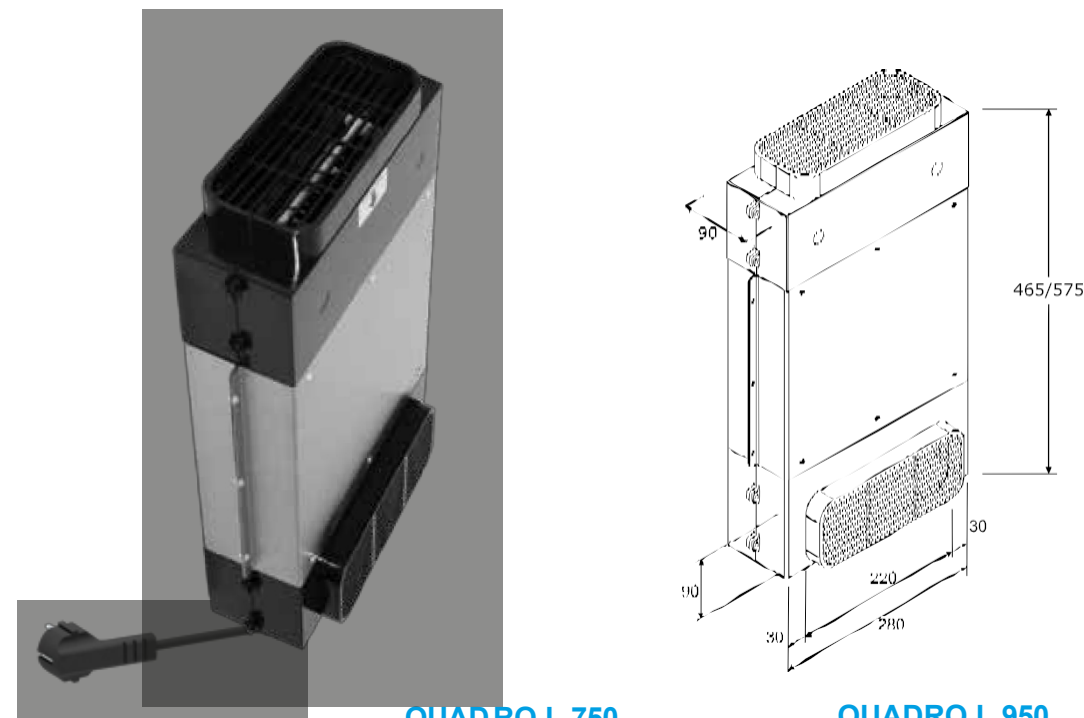
QUADRO 1200
MA 220 x 90 mm

| | | | |
|--------------------|--------------------|--------------------|--------------------|
| Art. no. | 8740 | 8780 | 8712 |
| Dimensions | 325 x 280 x 92 mm | 465 x 280 x 92 mm | 575 x 280 x 92 mm |
| Air flow rate | 400 m3/ h | 800 m3/ h | 1200 m3/ h |
| Connection voltage | 210 - 250 Volt | 210 - 250 Volt | 210 - 250 Volt |
| Motor connection | 220 x 90 mm | 220 x 90 mm | 220 x 90 mm |
| Weight | 3.0 kg | 6.0 kg | 6,5 kg |
| VP | 660 x 310 x 110 mm | 660 x 310 x 110 mm | 660 x 310 x 110 mm |
| measure | 1 piece Schuko | 1 piece Schuko | 1 piece Schuko |
| VP unit | / 195 cm | / 195 cm | / 195 cm |
| Plug / Cable | | | |

Contact time / incident flow velocity: depending on degree of contamination 0.1-1 sec, 2 min / max. pressure difference: at 2 m/s incident flow, 100 Pa
Electrical operation: primary: 210-250 V, 50Hz | secondary: HS approx. 5 KV, 10 Watt Power consumption: max. 10 Watt, max. 3.65 KW p.a. | Standby consumption: max. 0.5 Watt Subject to technical changes!



aira®
QUADRO L | Product info



QUADRO L 750
MA 220 x 90 mm

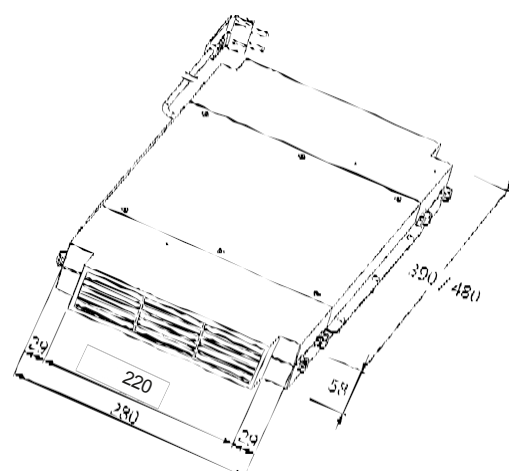
QUADRO L 950
MA 220 x 90 mm

| | | |
|--------------------|--------------------|--------------------|
| Art. no. | 8775 | 8795 |
| Dimensions | 465 x 280 x 92 mm | 575 x 280 x 92 mm |
| Air flow rate | 750 m3/ h | 950 m3/ h |
| Connection voltage | 210 - 250 Volt | 210 - 250 Volt |
| Motor connection | 220 x 90 mm | 220 x 90 mm |
| Weight | 5.7 kg | 6,5 kg |
| VP | 610 x 310 x 140 mm | 610 x 310 x 140 mm |
| measure | 1 piece Schuko | 1 piece Schuko |
| VP unit | / 195 cm | / 195 cm |
| Plug / Cable | | |

Contact time / incident flow velocity: depending on degree of contamination 0.1-1 sec, 2 min / max. pressure difference: at 2 m/s incident flow, 100 Pa
Electrical operation: primary: 210-250 V, 50Hz | secondary: HS approx. 5 KV, 10 Watt Power consumption: max. 10 Watt, max. 3.65 KW p.a. | Standby consumption: max. 0.5 Watt Subject to technical changes!



aira®
QUADRO slimline | Product info



QUADRO 600 slimline
MA 220 x 58 mm

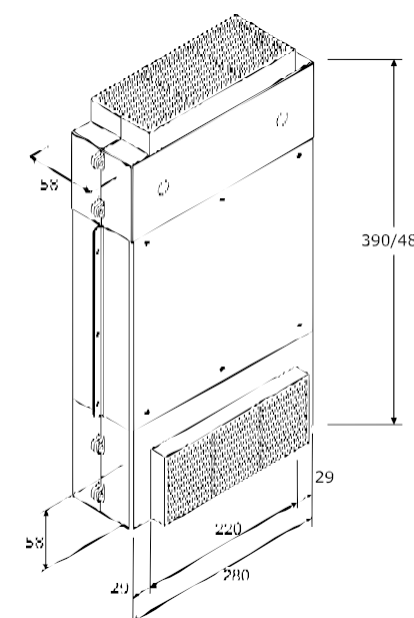
QUADRO 800 slimline
MA 220 x 58 mm

| | | |
|---------------------------|---------------------------|---------------------------|
| Art. no. | 8762 | 8782 |
| Dimensions | 390 x 280 x 58 mm | 480 x 280 x 58 mm |
| Air flow rate | 600 m3/ h | 800 m3/ h |
| Connection voltage | 210 - 250 Volt | 210 - 250 Volt |
| Motor connection | 220 x 58 mm | 220 x 58 mm |
| Weight | 3.4 kg net 3.9 kg gross | 4.0 kg net 4.5 kg gross |
| VP | 660 x 310 x 110 mm | 660 x 310 x 110 mm |
| measure | 1 piece | 1 piece |
| VP unit | Schuko / 195 cm | Schuko /195 cm |
| Plug / Cable | | |

Contact time / incident flow velocity: depending on degree of contamination 0.1-1 sec, 2 min / max. pressure difference: at 2 m/s incident flow, 100 Pa
Electrical operation: primary: 210-250 V, 50Hz | secondary: HS approx. 5 KV, 10 Watt Power consumption: max. 10 Watt, max. 3.65 KW p.a. | Standby consumption: max. 0.5 Watt Subject to technical changes!



aira®
QUADRO L slimline | Product info



QUADRO L 600 slimline
MA 220 x 58 mm

QUADRO L 800 slimline
MA 220 x 58 mm

| | | |
|---------------------------|---------------------------|-------------------------------|
| Art. no. | 8761 | 8781 |
| Dimensions | 390 x 280 x 58 mm | 480 x 280 x 58 mm |
| Air flow rate | 600 m3/ h | 800 m3/ h |
| Connection voltage | 210 - 250 Volt | 210 - 250 Volt |
| Motor connection | 220 x 58 mm | 220 x 58 mm |
| Weight | 3.4 kg net 3.9 kg gross | 4.0 kg net 4.5 kg gross 660 |
| VP | 660 x 310 x 110 mm | x 310 x 110 mm |
| measure | 1 piece Schuko | 1 piece Schuko |
| VP unit | / 195 cm | / 195 cm |
| Plug / Cable | | |

Contact time / incident flow velocity: depending on degree of contamination 0.1-1 sec, 2 min / max. pressure difference: at 2 m/s incident flow, 100 Pa
Electrical operation: primary: 210-250 V, 50Hz | secondary: HS approx. 5 KV, 10 Watt Power consumption: max. 10 Watt, max. 3.65 KW p.a. | Standby consumption: max. 0.5 Watt Subject to technical changes!





aira®

PLANO | Product Info

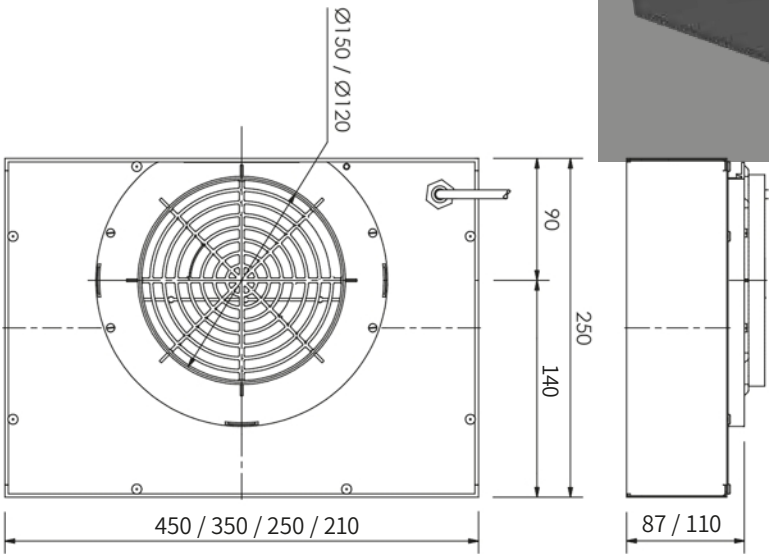
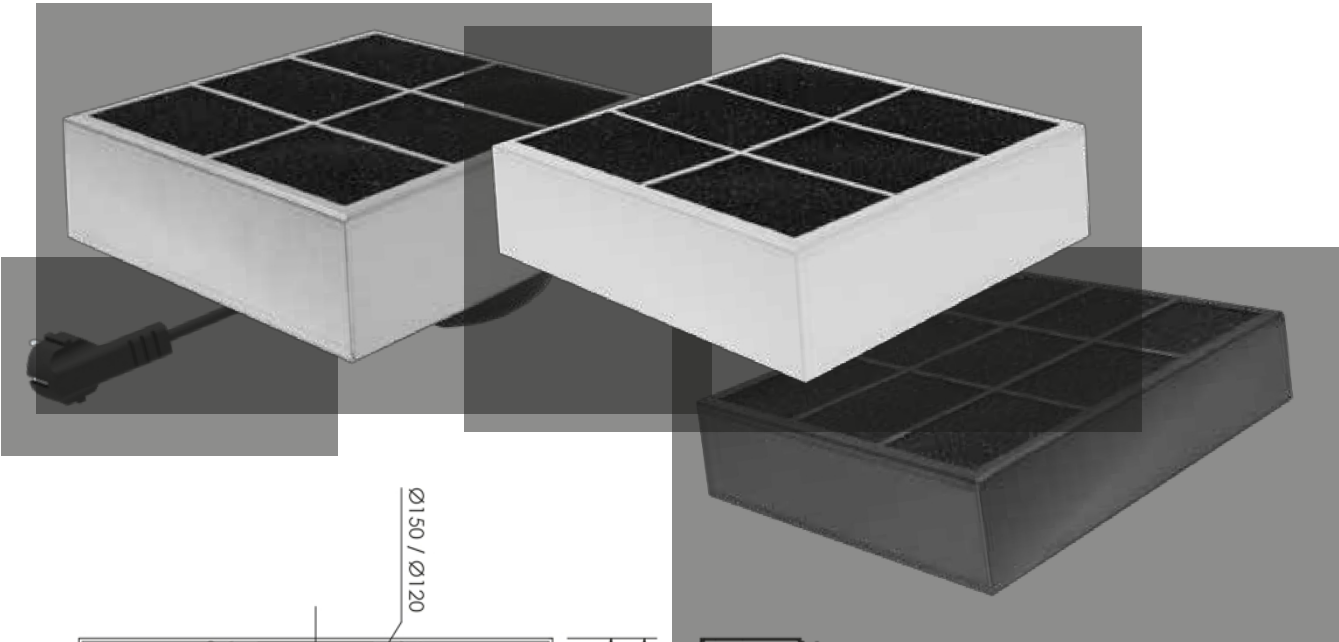
Included in delivery:

PLANO 8940, 8950, 8960, 8980: art. no. 7550 (adapter | reducer) A150/150, eccentric)

7020_210 (hose clamp Ø 210)

PLANO 8948, 8958, 8968, 8988: art. no. 7550 (adapter MA120/120, eccentric),

7020_180 (Hose clamp Ø180)



Stainless steel (standard)
white powder-coated possible
black powder-coated possible

PLANO 400

MA Ø 120/150 mm

PLANO 500

MA Ø 120/150 mm

PLANO 600

MA Ø 120/150 mm

PLANO 800

MA Ø 120/150 mm

| | | | | |
|------------------|--|--|--|--|
| Item no. | Ø 150 mm 8940 8940_white 8940_black | Ø 150 mm 8950 8950_white 8950_black | Ø 150 mm 8960 8960_white 8960_black | Ø 150 mm 8980 8980_white 8980_black |
| Item no. | Ø 120 mm 8948 8948_white 8948_black | Ø 120 mm 8958 8958_white 8958_black | Ø 120 mm 8968 8968_white 8968_black | Ø 120 mm 8988 8988_white 8988_black |
| Dimensions | 210 x 250 x 87 mm | 250 x 250 x 87 mm | 350 x 250 x 87 mm | 450 x 250 x 110 mm |
| Air performance | 400 m3/ h | 500 m3/ h | 600 m3/ h | 800 m3/ h |
| Connection- | | | | |
| Voltage | 210 - 250 Volt | 210 - 250 Volt | 210 - 250 Volt | 210 - 250 Volt |
| Motor connection | Ø 120 + 150 mm | Ø 120 + 150 mm | Ø 120 + 150 mm | Ø 120 + 150 mm |
| Weight | 2,2 kg | 2,5 kg | 3,1 kg | 3,8 kg |
| VP measure | 400 x 260 x 230 mm | 400 x 260 x 230 mm | 400 x 260 x 230 mm | 610 x 320 x 140 mm |
| VP unit | 1 piece | 1 piece | 1 piece | 1 piece |
| Plug / Cable | Schuko / 195 cm | Schuko / 195 cm | Schuko / 195 cm | Schuko / 195 cm |

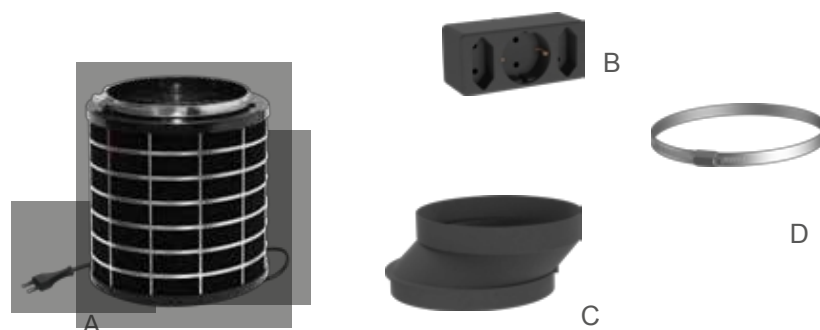
Contact time / incident flow velocity: depending on degree of contamination 0.1-1 sec, 2 min / max. pressure difference: at 2 m/s incident flow, 100 Pa
Electrical operation: primary: 210-250 V, 50Hz | secondary: HS approx. 5 KV, 10 Watt Power consumption: max. 10 Watt, max. 3.65 KW p.a. | Standby consumption: max. 0.5 Watt Subject to technical changes!



aira® RONDO | Assembly Instructions

PACKAGE CONTENTS

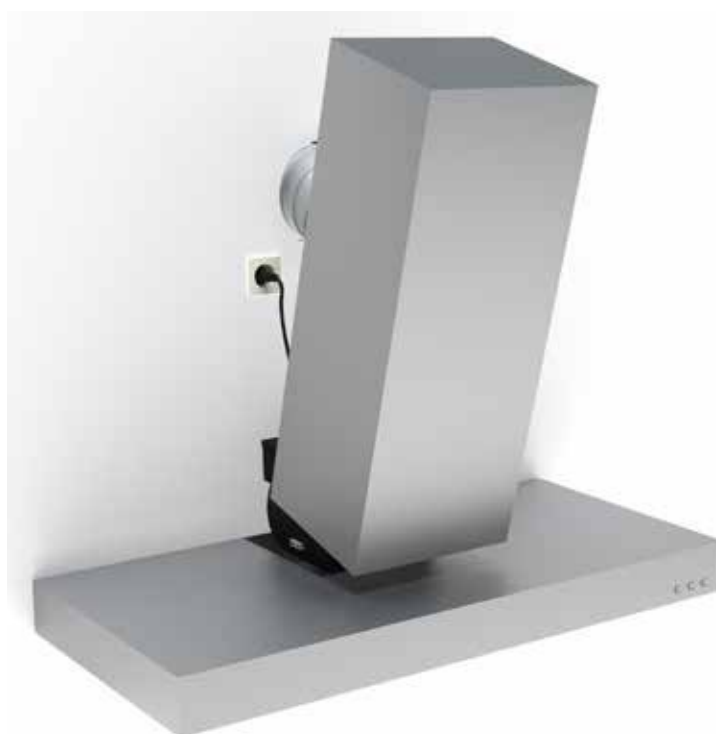
- A | aira® RONDO filter module
- B | Triple plug
- C | Eccentric adapter
- D | Hose clamp



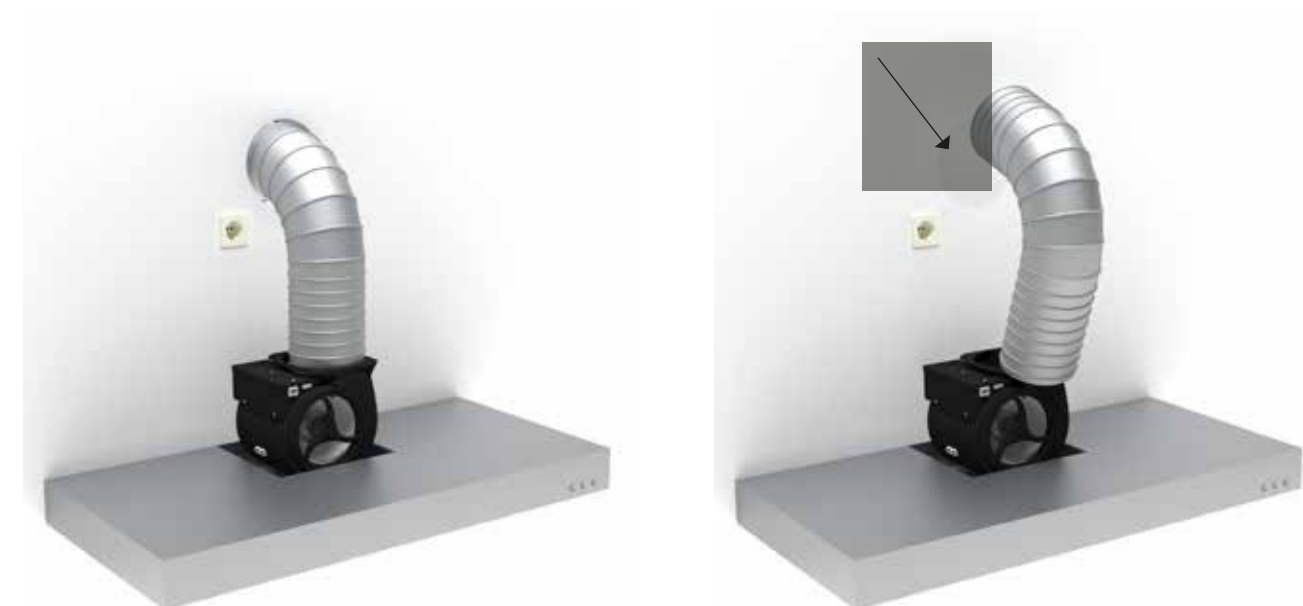
The aira® **RONDO filter** is placed on the extractor hood motor. With this aira® filter system, you can turn your cooker bonnet into an air purification unit with up to 98% absorption of all odours, viruses and bacteria.

To mount the filter, proceed as follows:

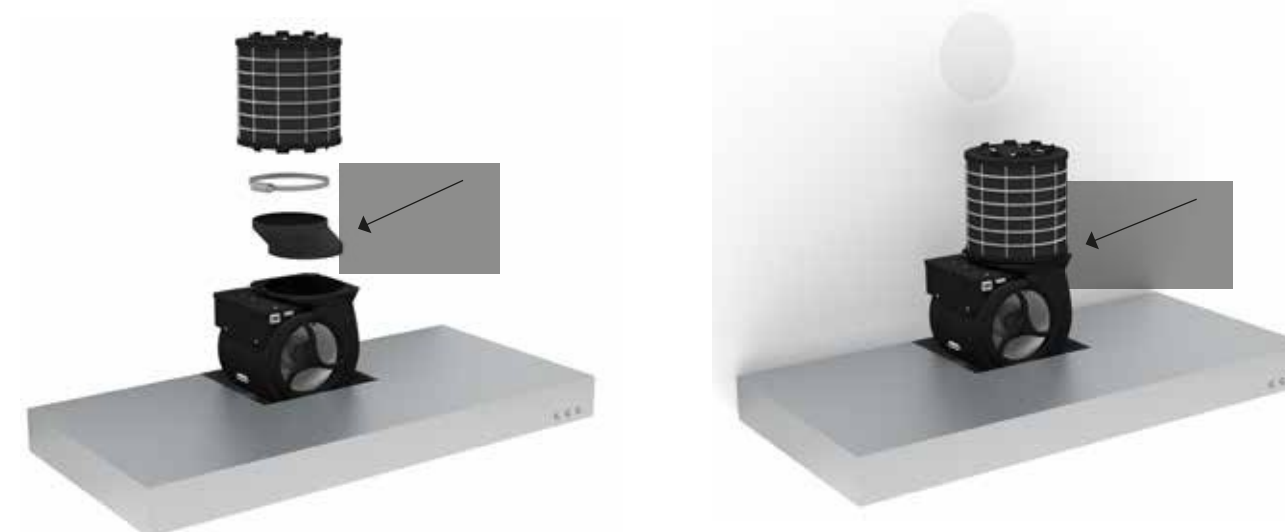
1. remove the chimney shaft and disconnect the bonnet from the mains.



2. Remove the exhaust air hose or charcoal filter and, if present, close the exhaust air hole.



3. If the adapter (C) is used, place it on the spigot. Place the filter (A) on the adapter (C) or directly on the exhaust air spigot.

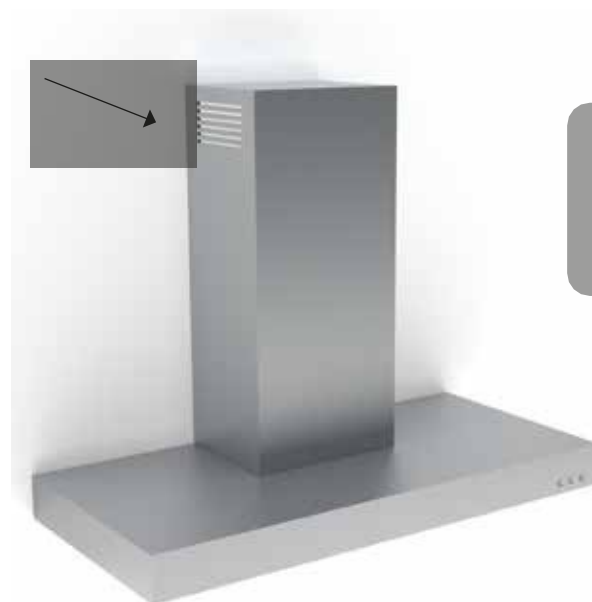


aira® RONDO | Assembly instructions

4. Connect the bonnet and filter plugs to the triple plug (B).



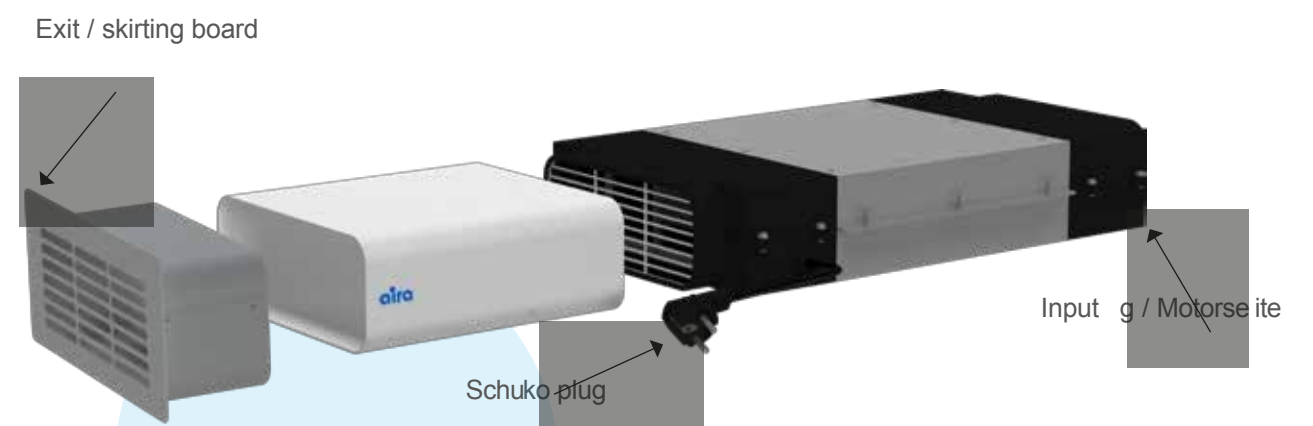
5. Put the chimney shaft back on the bonnet.



! ventilation slots in the chimney shaft from which the circulating air can escape.

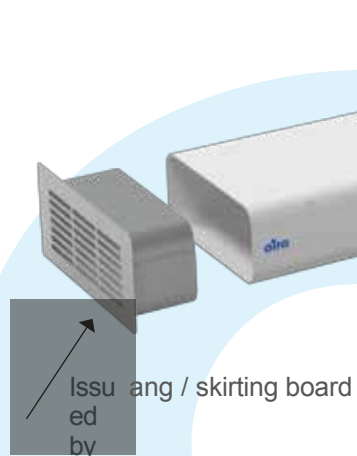
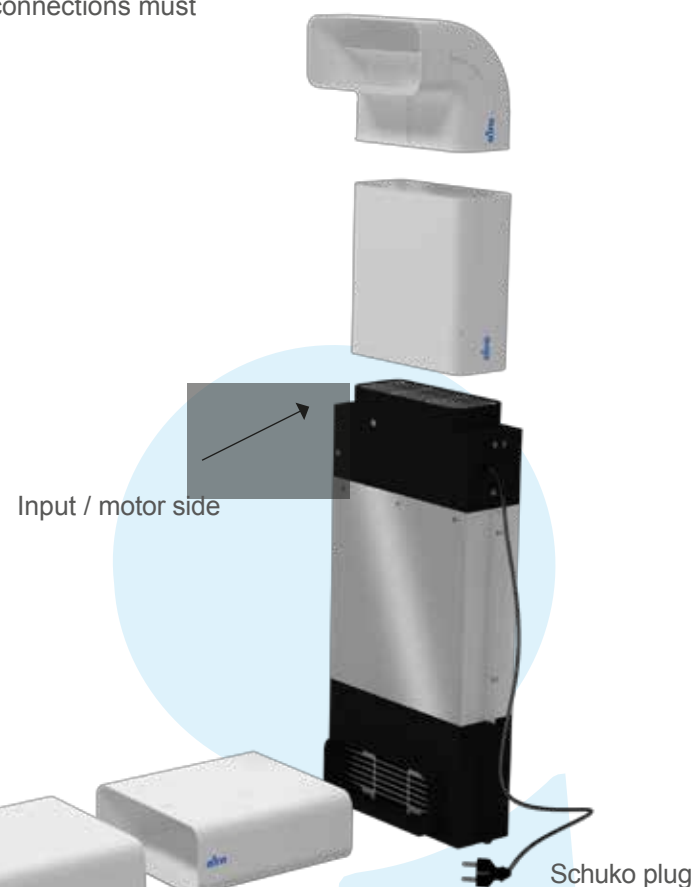
aira® QUADRO + QUADRO slimline | Assembly instructions

1. The airo® QUADRO **filter** can be mounted in almost any position (transverse, vertical, upright, etc.). The only decisive factor is the correct positioning of the motor side and the resulting output.
2. Depending on the components used, the connections must be sealed.



aira® QUADRO L + QUADRO L slimline | Assembly instructions

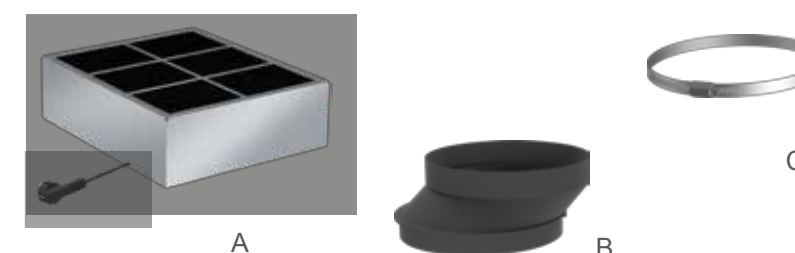
1. The **aira® QUADRO L filter** can be mounted in almost any position (transverse, vertical, upright, etc.).
The only decisive factor is the correct positioning of the motor side and the resulting output.
2. Depending on the components used, the connections must be sealed.



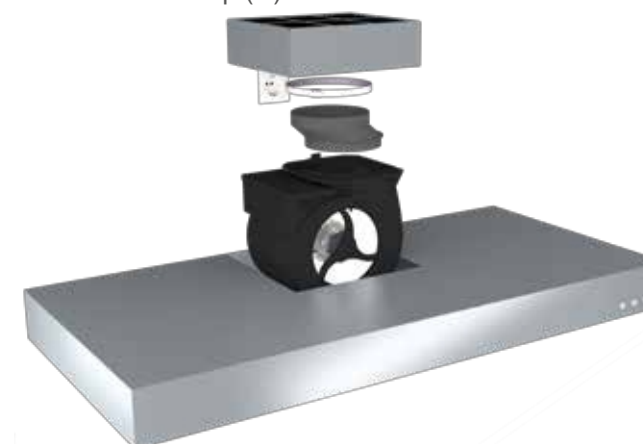
aira® PLANO | Assembly instructions

PACKAGE CONTENTS

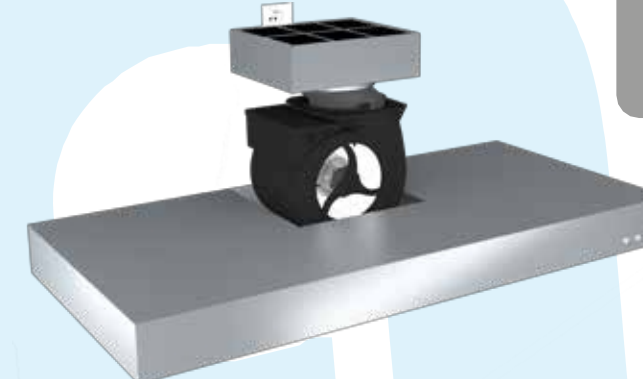
- A | **aira® filter module PLANO**
- B | Eccentric adapter
- C | Hose clamp



1. Place the **aira® PLANO** (A) on the adapter (C) or directly on the exhaust air connection piece and tighten the hose clamp (D).



2. Connect the bonnet and filter plugs to the socket.



Only fit the adapter (C) if the motor exhaust vent is too close to the wall.



Important warnings

- Only use **aira®** filters with a commercially available fume cupboard unit with grease filters in combination with fire-retardant properties.
- Good ventilation should always be ensured so that there is sufficient oxygen in the room air. Commercially available brand bonnets also indicate this!
- Please do not insert any objects into the **aira** module under any circumstances! There is a risk of electric shock! ALWAYS work on the module with the mains plug pulled out!
- Touching the module with wet hands or objects also involves the risk of electric shock. Always work on the module when the mains plug is disconnected!
- Blocking of the air inlet and air outlet must be avoided at all costs. If necessary, pull out the mains plug!
- If the module shows signs of damage, it must not be used under any circumstances!
- Persons with reduced physical, sensory or mental capabilities or lack of experience and children over the age of 8 may only use this module under the supervision of a competent person. Further warnings can be found in the following chapters.
- The module is in no way to be used as a toy for children!
- Cleaning or maintenance work must not be carried out by children without a competent person!
- Please observe the installation instructions and warnings of your extractor bonnet.
- **aira®** was designed exclusively for use in private households!
- As in the manual for your extractor bonnet, we also point out that you should never allow high flames to develop under the bonnet! Likewise, do not flambé under extractor bonnets, as both lead to a fire hazard and cause considerable consequential damage!
- Similarly, overheated oil is a potential fire hazard. Never extinguish with water!
- Carbon monoxide or other chemical gases cannot be removed with the **aira®**!



Warnings and instructions for installation

- The **aira®** filter module may only be connected with the cable plug belonging to the unit! (Warranty)
- If the supply line is damaged, the unit must be returned to the dealer/manufacturer for scrapping.
- Carefully open the packaging and take out the **aira®** filter module and check the package contents for completeness! Keep the packaging until the functional test for correct operation and use it for return shipment if necessary. Otherwise, please dispose of in an environmentally friendly manner. Thank you!
- Please observe the installation instructions and follow them step by step. Check the connection between the **aira®** filter module and the motor outlet for tightness to avoid air leaks so that the system works faultlessly.
- Check that the mains plug is and remains freely accessible after installing the module! The integrated mains connection cable cannot and must not be replaced.
- **NOTE:** If the **aira®** filter is not installed according to these instructions, the warranty claim on the **aira®** filter expires with immediate effect !
- All **aira®** filter modules listed in these instructions are plug-in products. Please follow the assembly instructions.
- The mains supply should be guaranteed by a nearby socket (210-250 V / 50 Hz).
- If there are small black ball-like particles in the packaging, these originate from the high-performance carbon filter and were released during transport. This does not affect the functioning of the **aira®** filter! These particles are harmless and can be disposed of with household waste. Please do not use for consumption!
- **The unit may only be operated with the supplied supply line.**



Warnings for operation

For optimal room air purification, it is imperative that your extractor bonnet is sufficiently ventilated and adapted to the respective steam development:

- Start your extractor bonnet 10 minutes before you start cooking on level 1 or 2.
- After the cooking process is finished, the extractor bonnet **must** run on level 1 or 2 for at least 15 minutes.
- If the room volume exceeds 50 m³ (width x length x height = room volume), the overrun time should be at least 15 minutes.
- The distance between filter and furnishings should be at least **10 mm**.
- When using grills or deep fryers, please double the runtime of the post ventilation.
- **The grease filter of the extractor bonnet should be at least 8-layered.**

The ^{aira} module also acts as an air purifier at low speed and cleans the air not only of kitchen vapours and odours, but also all kinds of allergens, bacteria, pollen and viruses, thus ensuring healthy indoor air.

Care and maintenance

If the ^{aira} filter module is installed according to the installation instructions, it requires no maintenance. The ^{aira} filter module starts the automated cleaning process as soon as it is in operation.

The ^{aira} filter module operates maintenance-free. However, make sure that the grease filter of your cooker bonnet is cleaned regularly and is free of grease.

Warranty services and conditions

We at AVITANA® are pleased about your purchase of one of our high-technology modules and are convinced that your living comfort will be increased by the fresh and purified air.

We grant a **60-month guarantee** on our products provided that they are installed correctly and professionally. **It is essential to observe the pre- and post-running times of the cooker bonnet.**

Should you nevertheless have reasons for complaint, please contact your dealer, who will then contact us. Together we will find a good solution.

Final notes

The manufacturer's operating instructions must be read carefully before installation! If the filter does not operate properly, please check first:

- a) whether the power supply is guaranteed (check the socket / connect another device if necessary).
- b) whether the appliance plug has any defects or is firmly inserted in the socket.

The installation of the ^{aira} filters

The ^{aira} filter is relatively easy to install. The installation of the ^{aira} filter is intended as a retrofit or conversion of an existing extractor hood unit or its use in recirculation mode. The step-by-step procedure is described in these installation instructions.

Please dispose of the packaging in an environmentally friendly way. Thank you!

The ^{aira} filter module complies with the requirements of EU regulations and the EC directives for waste electrical and electronic equipment (WEEE)! All components of the filter module can be recycled! The packaging materials can be recycled in an environmentally friendly way. These installation instructions have been prepared by our technicians with all due care.

No legal claims can be derived from printing or spelling errors!

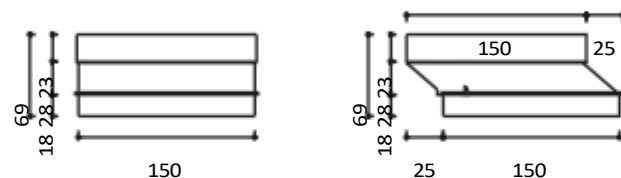


The manufacturer of the product(s) described herein, to which this declaration refers, hereby declares under his sole responsibility that these product(s) comply with the relevant, basic safety, health and protection requirements of the EC directives existing herein and that the corresponding test control, in particular the CE declaration of conformity duly issued by the manufacturer or his authorised representative, are available for inspection by the competent authorities and can be requested via the equipment seller.

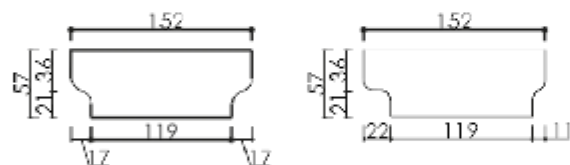


aira®
RONDO |
Accessories

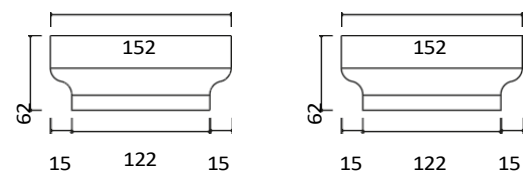
Adapter (MA150/150, eccentric) | included with RONDO models 8521, 8821, 8121 | [art. no. 7550](#)



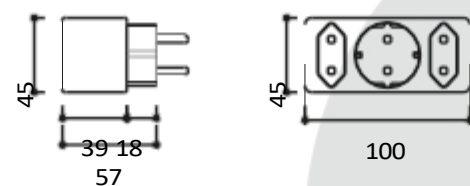
Adapter | Reducer (MA150/120, eccentric) | included with RONDO models 8113, 8115, 8116, 8418, 8618, 8818 | [art. no. 7547](#)



Adapter | Reducer (MA150/120, straight) [Art. no. 7551](#)



Euromulti plug 2+1 (1 Schuko plug, 2 Euro plugs) | included in the scope of delivery for all RONDO models | [art. no. 7001](#)



aira®
RONDO | Accessories

Hose clamp Ø 210 | included in the scope of delivery for all corresponding RONDO models
[Item no. 7020_210](#)

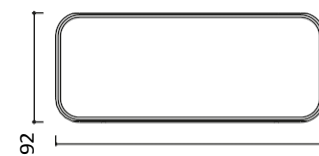
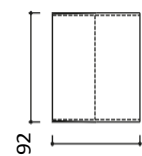


Hose clamp Ø 180 | included in the scope of delivery for all corresponding RONDO models
[Item no. 7020_180](#)



aira®
QUADRO |
Accessories

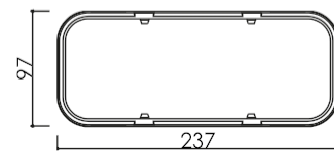
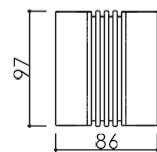
QUADRO
connector **art. no.**
7557



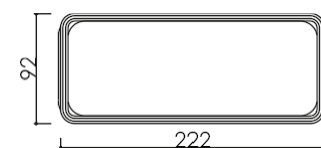
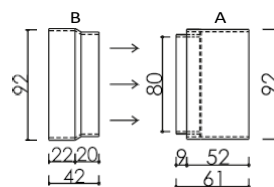
74

227

QUADRO universal
connector **art. no. 7557_Flex**



QUADRO Adapter
International **art. no. 7569**



Bora adapter
art. no. 7577



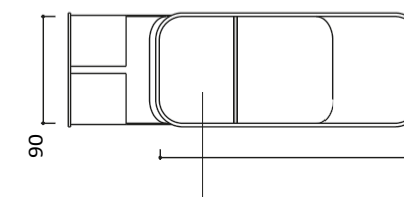
aira®
QUADRO | Accessories

QUADRO tube 500 mm
art. no. 7556

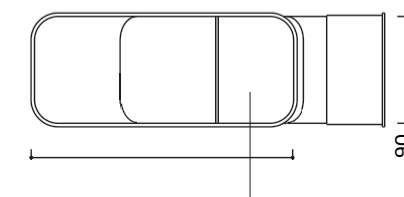


227

QUADRO bend horizontal 90°
art. no. 7565

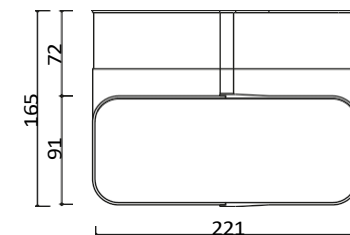
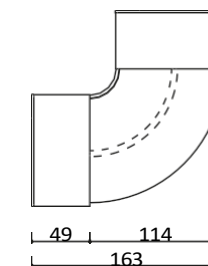


221

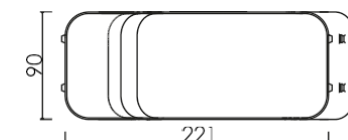
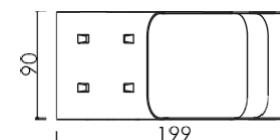


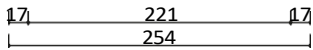
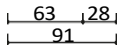
221

QUADRO bend vertical 90°
art. no. 7566



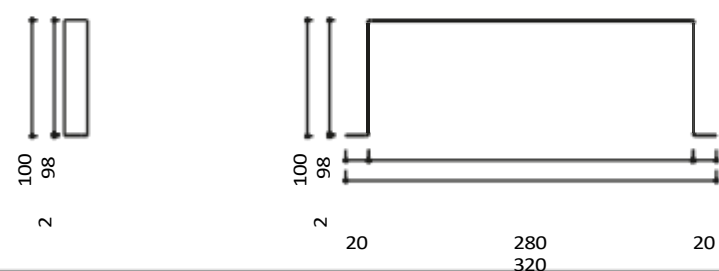
QUADRO bend horizontal 30°
art. no. 7570



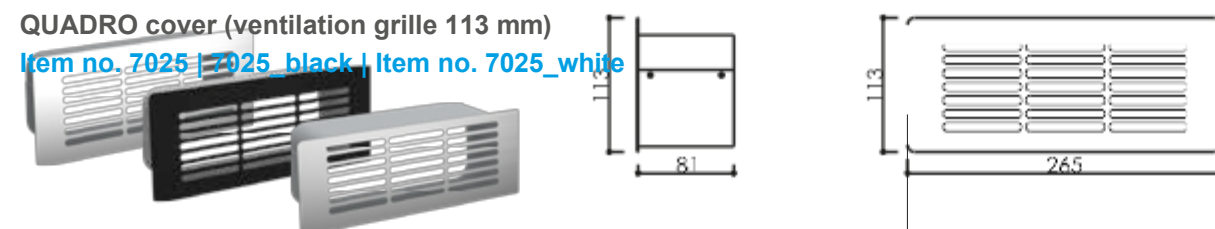


aira®
QUADRO |
Accessori
es

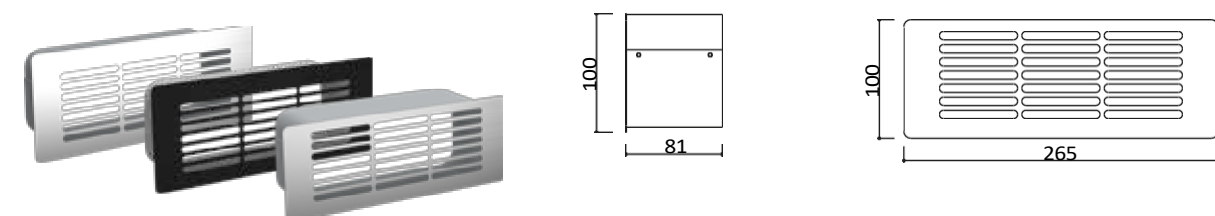
QUADRO bracket
art. no. 7017



QUADRO cover (ventilation grille 113 mm)
Item no. 7025 | 7025_black | Item no. 7025_white

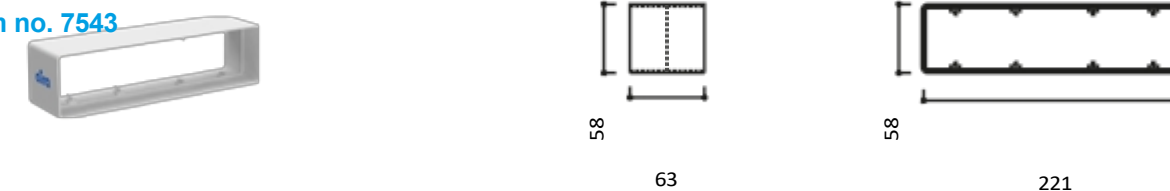


QUADRO cover (ventilation grille 100 mm)
Item no. 7026 | 7026_black | Item no. 7026_white

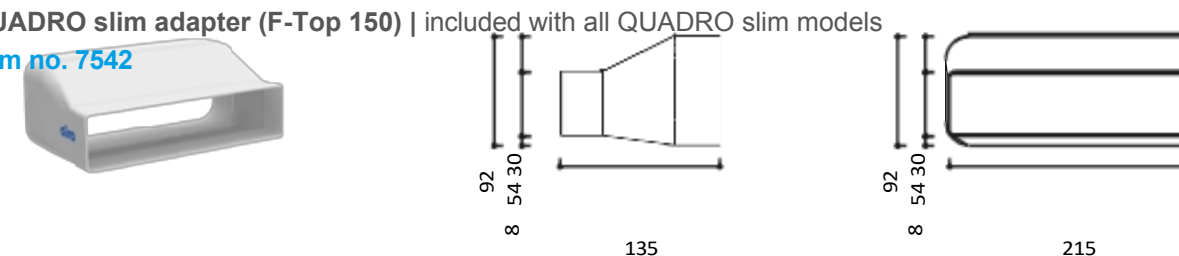


aira®
QUADRO slimline | Accessories

QUADRO slim wide duct connector | included with all QUADRO slim models
Item no. 7543



QUADRO slim adapter (F-Top 150) | included with all QUADRO slim models
Item no. 7542



QUADRO slim wide duct reducer (300 mm) Art.
no. 7578

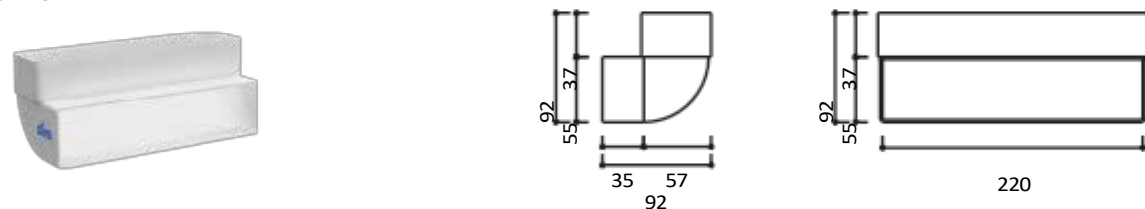


QUADRO slim wide duct pipe 500
mm Art. no. 7541

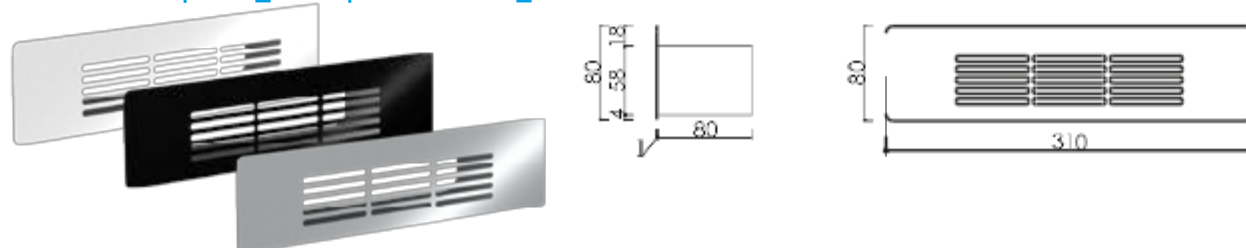


aira®
QUADRO slimline |
Accessories

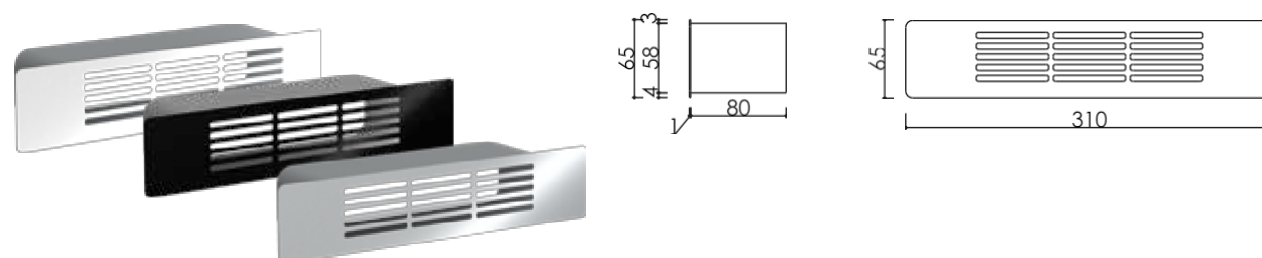
QUADRO slim wide duct bend vertical 90°
Art. no. 7544



QUADRO slim cover (ventilation grille 80 mm)
art. no. 7567 | 7567_black | art. no. 7567_white

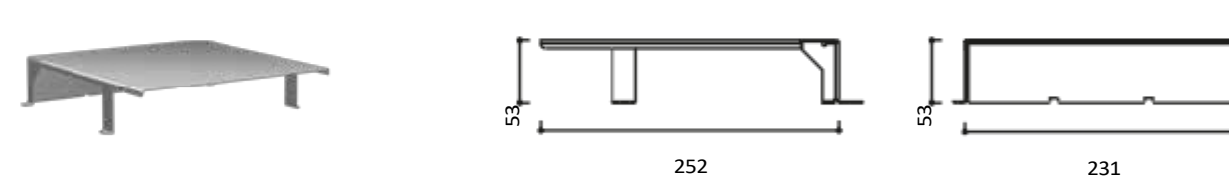


QUADRO slim cover (ventilation grille 65 mm)
art. no. 7568 | 7568_black | art. no. 7568_white

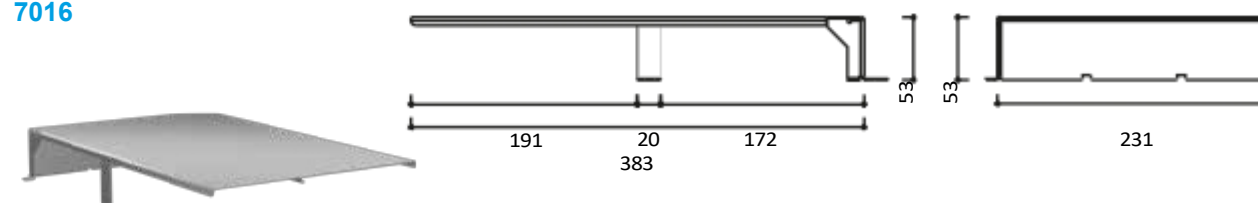


aira®
PLANO | Accessories

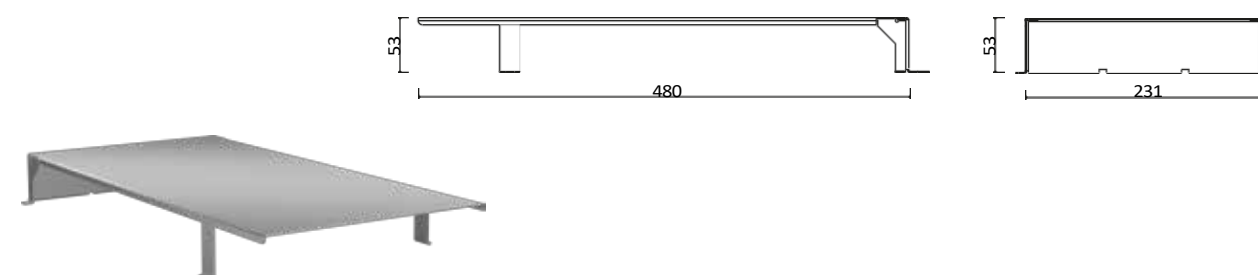
Cover PLANO 400/500 (air duct) art. no. 7018



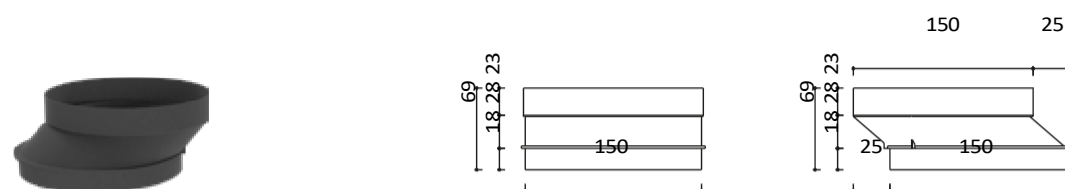
Cover PLANO 600 (air duct) Art. no. 7016



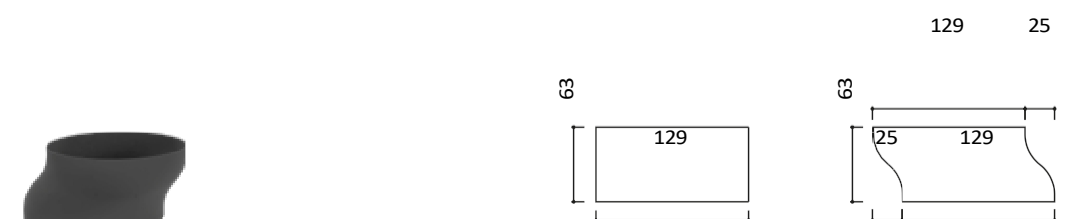
Cover PLANO 800 (air duct) Art. no. 7015



Adapter (MA150/150, eccentric) | included with PLANO models 8940, 8950, 8960, 8980 | [art. no. 7550](#)



Adapter (MA 120/120, eccentric) included with PLANO models 8948, 8958, 8968, 8988 | [art. no. 7546](#)



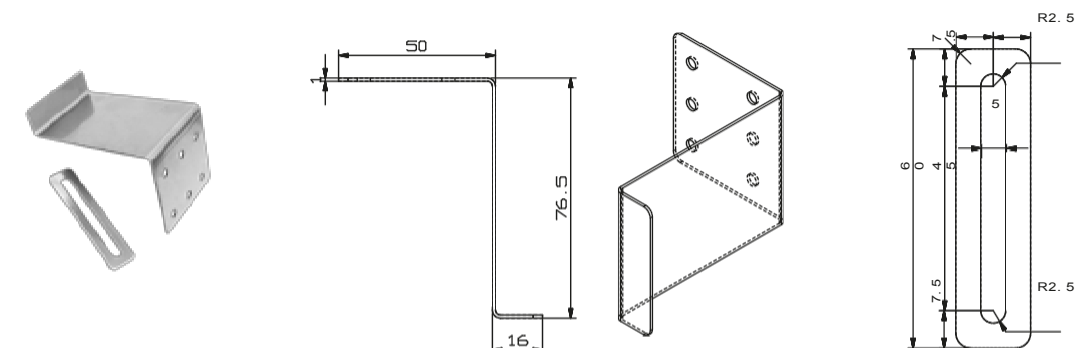
Hose clamp Ø 210 | included in the scope of delivery for all corresponding PLANO models
[Item no. 7020_210](#)



Hose clamp Ø 180 | included in the scope of delivery for all corresponding PLANO models
[Item no. 7020_180](#)



PLANO fixing bracket (set consisting of 2 brackets and 2 retaining plates) | [Art. no. 7082](#)



Kitchen planning programmes

There are several IT-supported planning programmes for the kitchen industry, but only a few have achieved a very high market penetration. These include the systems from Carat, Compusoft/Cyncl (Winner Flex) and SHD (KPS.MAX). Avitana's plasma filters are integrated into all three of the aforementioned planning programmes and are thus present on decisive channels for kitchen planners and studios.

Product integration in kitchen planning programmes not only makes consultation more efficient, but also simplifies and accelerates the entire planning process and limits possible sources of error. The sales department also has easier access to the decision-makers and, vice versa, Avitana benefits from the product development. The respective product catalogues can be requested from the company or - thanks to digitisation - downloaded or subscribed to in the supplier cloud.

CARAT

WF Winner Flex

KPS.MAX

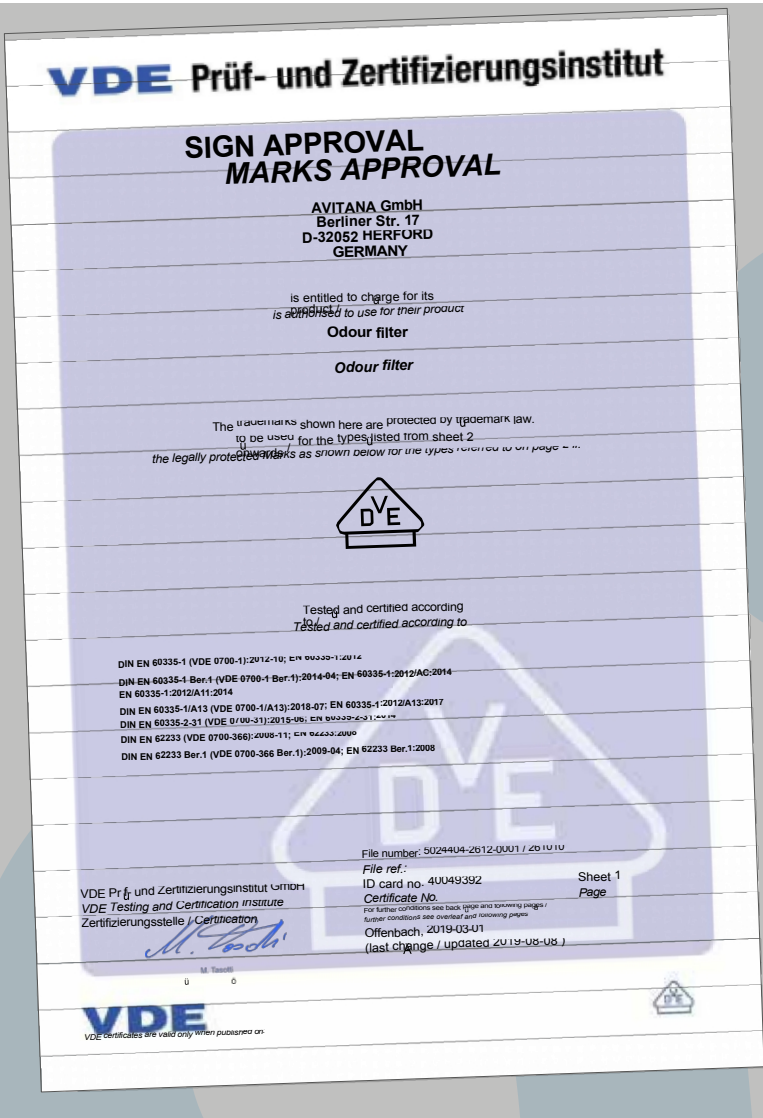
Monitoring and certification

For Avitana, product quality comes first - also in terms of electrical safety and consumer protection. Thanks to permanent monitoring and annual certification by the VDE Testing and Certification Institute (Offenbach a.M.), the plasma systems guarantee 100 percent tested reliability. Currently the only one on the market!

In addition to the VDE mark, the IUTA certificate of the Energy and Environment Institute (Duisburg) guarantees the quality of the purified exhaust air from a health point of view. With Avita-, it is demonstrably completely decomposed.
na filters convert the ozone briefly produced in the purification process into pure oxygen - before the purified air leaves the filters.

Studies by the IPN Leibniz Institute for Plasma Science and Technology (Greifswald) also confirm that Avitana's filter systems guarantee complete ozone freedom thanks to their sophisticated design.

"Almost odourless sizzling", on the other hand, is certified by the Kiel Institute Olfasense with test certificate 1296-2020-00. After successful tests in accordance with DIN EN 13725:2003 (determination of odour concentration by means of dynamic olfactometry), the certificate scientifically confirms the exceptionally high reduction of odour when frying fish and French fries. Olfasense is active worldwide and is monitored by the German accreditation body DAkKS.



Institute for Energy and
Environmental Technology
e.V. (IUTA)
Air Pollution Control & Filtration
Bliersheimer Straße 58 - 60
47229 Duisburg Germany



IUTA certificate

Ozone emission of the Rondo 500 plasma filter unit
with and without activated carbon filter

Client: Avitana GmbH
IUTA report: UN2-180716-T5599900-079
Certificate number: UN2-180716-T5599900-079
Test specimens: Plasma filter unit Rondo 500 with activated carbon
filter Plasma filter unit Rondo 500 without activated
carbon filter
(each installed in a standard cooker bonnet)

Tested parameters

Test chamber: 30 m³ CADR test chamber
Measured substance: Ozone (O₃)
Measuring device: MLU 400 Ozone Monitor

Measurement results

| Test specimen | Ozone concentration in test chamber after 90 minutes |
|--|--|
| Plasma filter unit Rondo 500 with Activated carbon filter | 4 ppb |
| Plasma filter unit Rondo 500 without activated carbon filter | 879 ppb |

The ozone concentration in the test chamber after 90 minutes is 99.5 % lower with an activated carbon filter than without.



Labortestbericht für Raumreinigung und Technologie e.V.
per Fernübermittlung 2 - 1100 Stunden

AVITANA GmbH
Berliner Straße 17
32052 Herford

Greifswald, den 16.07.2023

Arbeitsprinzip und Aktivität ihrer Plasmamodule – Aktivkohleneinheit

Sehr geehrte Damen und Herren,
wir danken Ihnen für das entgegengebrachte Vertrauen, dass Sie uns mit Ihrer Beauftragung empfangen werden haben.

Wir haben die von Ihnen zur Verfügung gestellten Aktivkohlefilter hinsichtlich des Abbaus von Ozon untersucht. Dazu wurden Proben der Filter mit einem Ozonkonzentrationsgenerator in 300ppm Plasmazelle bei geschlossenen Ventilen, wie sie in Ihren Produkten auftreten, beaufschlagt. Dabei wurde ein Ozonstrom von 100 ppm in einen Ozonstrom von 100 ppm umgewandelt. Ob bzw. wann es zum Durchbruch kommt, hängt von der Menge an Ozon und der Versuchsdauer ab. Bei 100 ppm Eingangskonzentration wurde nach ca. 9 Stunden Versuchsdauer eine Konzentration von ca. 20 ppm gemessen. Bei einer Eingangskonzentration von 60 ppm stiegen nicht mehr als 1 ppm auf nach mehreren Durchläufen. Bei 40 ppm liegt der Wert hinter der Aktivkohle für mehr als eine Stunde unter dem Geruchsschwellenwert von 50 ppb.

Ihre Plasmamodule produzieren deutlich weniger als 40 ppm Ozon, so dass davon ausgegangen werden kann, dass hinter den Aktivkohlefilter kein Ozon mehr nachweisbar sein wird, was sich mit früheren Beobachtungen aus Untersuchungen in unseren Häusern deckt und die Aktivkohlefilter somit auch über einen langen Zeitraum wirksam sein sollten. Die Plasmareinigung Ihrer Module könnte gestoppt werden, ohne dass ein störendes Durchbrechen zu befürchten wäre.

Mit freundlichen Grüßen

R. Bräutigam

Prof. Dr. Romy Bräutigam
Forschungsschwerpunkt: „Plasmachemische Prozesse“

| | | | | |
|-----------------------------|----------------|------------------|----------------|----------------|
| Forschungsschwerpunkt (FWS) | Titel | • 10.100.100.100 | Seite | 10.100.100.100 |
| 10.100.100.100 | 10.100.100.100 | 10.100.100.100 | 10.100.100.100 | 10.100.100.100 |



Labortestbericht für Raumreinigung und Technologie e.V.
per Fernübermittlung 2 - 1100 Stunden

AVITANA GmbH
Berliner Straße 17
32052 Herford

Greifswald, den 26.04.2021

Befehl: Arbeitsprinzip und Aktivität der Plasmazelle „RONKO“

Sehr geehrte Damen und Herren,

In Ihrem Auftrag haben wir vier unterschiedliche Exemplare des Plasmagenerators „RONKO“ untersucht. Wir haben das Arbeitsprinzip der Ozon-erzeugenden Plasmazelle untersucht und damit unter Vorzeichen der Ozon-erzeugenden Plasmazelle die Ozonproduktion des Plasmas von Feuchtigkeit in der behandelten Luft betrachtet.

Wir haben die Ausbildung einer Barrierenreaktion (Dunkelreaktion) untersucht, an der Elektroden beobachtet, in der Ozon erzeugt wird. Ozon wurde in allen getesteten Exemplaren gemessen. Eine höhere Ozonkonzentration wird durch Erhöhung der Betriebsspannung erreicht.

Während der Integration Aktivkohle wird das Ozon abgebaut. Wir haben außerdem das vollständige Getriebe kein Ozon oder andere Nebenprodukte der Plasmareinigung festgestellt können.

Für das entgegengebrachte Vertrauen und den Forschungsauftrag bedanken wir uns herzlich.

Mit freundlichen Grüßen

R. Bräutigam

Prof. Dr. Romy Bräutigam
Forschungsschwerpunkt: „Plasmachemische Prozesse“

| | | | | |
|-----------------------------|----------------|------------------|----------------|----------------|
| Forschungsschwerpunkt (FWS) | Titel | • 10.100.100.100 | Seite | 10.100.100.100 |
| 10.100.100.100 | 10.100.100.100 | 10.100.100.100 | 10.100.100.100 | 10.100.100.100 |



Kurzbericht: Bestimmung des Geruchsminderungsgrad vom aira rondo Filter

Endkunde: Avitana GmbH

Berichtsnummer: 1296-2020-00K

Produkt: Plasmafilter aira rondo (Bj. 2020)

Durchführungszeitraum: Februar 2020

Ziel dieser Untersuchung war es, den Geruchsminderungsgrad vom Plasmafilter aira rondo, bestehend aus einem Plasmaelement und einem Aktivkohleelement, zu bestimmen. Als Geruchsquelle dienten 2 verschiedene Bratzszenarios (Pommes und Fisch). Die olfaktometrischen Messungen erfolgten gemäß DIN EN 13725:2003.

Ergebnis:

Der aira rondo Plasmafilter (im Bericht genannt Vollfilter) erreichte in dieser Untersuchung einen Geruchsminderungsgrad von 95,0% für den Fischgeruch und 96,5% für den Pommesgeruch.

Kiel, 12.05. 2020

(Björn Maxeiner - Director, Olfasense GmbH)

Dieser Kurzbericht gilt in Verbindung mit Bericht 1296-2020-00.



Olfasense GmbH www.olfasense.com

Roll-up



aira® Roll-up Format:
85 x 200 cm [Item no. 8014_01](#)

Display



aira® trade display (incl. 17 inch screen with product movie) Format:
1.80 m high/1 m wide
base plate:
1.20 m wide / 55 cm deep
sign:
24 cm high/60 cm wide
[Item no. 8013](#)

atme!



aira® Plexiglas shaft for exhibitions with dummy for presentation Width: 33.8 cm
Height: 50 cm
Depth: 26.3 cm
Art. no. 8012

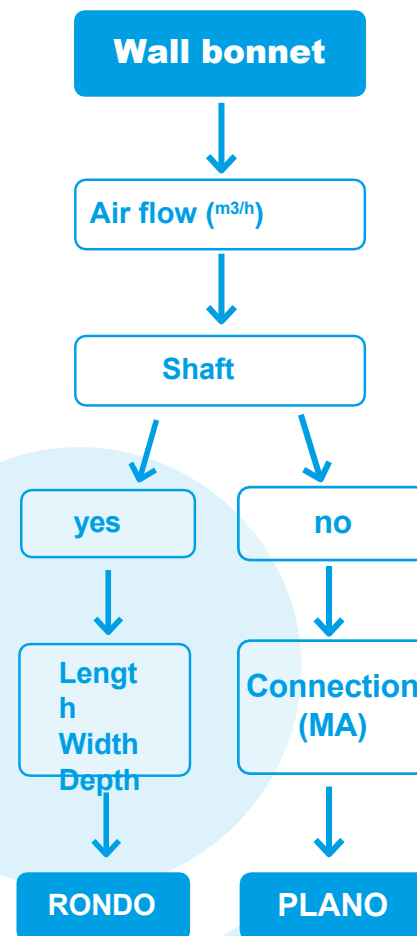
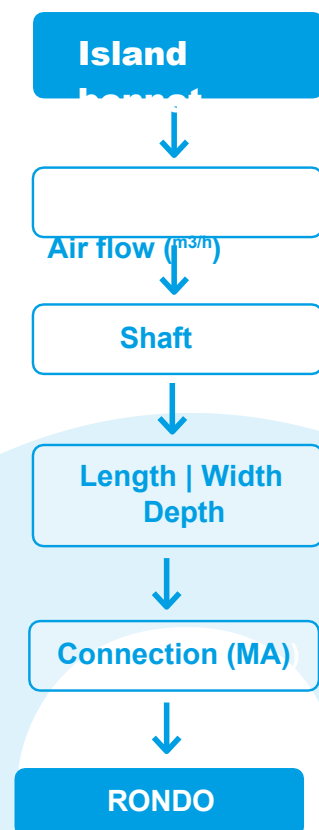
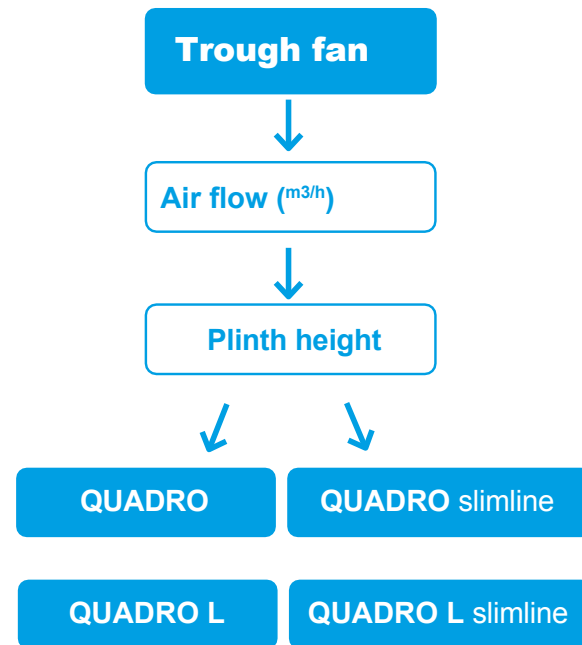


aira® presentation case
Contents: 3 dummies (1 RONDO, 1 QUADRO, 1 PLANO), 1 grid panel, 1 sales folder
Art. no. 8010



Welchen aira® Filter benötige ich?

AN ORIENTATION GUIDE



AVITANA CENTRAL

Phone +49 5221 763 780-0

Fax +49 5221 763 780-9

PLANNING SUPPORT | TECHNICAL ENQUIRIES

technik@avitana.de

CUSTOMER ADVISORY SERVICE

info@avitana.de

ORDERS

auftrag@avitana.de

YOUR CONTACT PERSONS IN THE OFFICE CUSTOMER SERVICE

INTERNATIONAL

Petra Striehn-Happ

Phone +49 5221 763 780-13

petra.striehn-happ@avitana.de

NATIONAL CUSTOMER SERVICE

Ute Heinemann

Phone +49 5221 763 780-12

ute.heinemann@avitana.de

PROJECT MANAGEMENT

Nils Heitmann

Phone +49 5221 763 780-14

nils.heitmann@avitana.de

MANAGEMENT DEVELOPMENT &

SALES

Jürgen Heitmann CEO

Tel. +49 5221 763 780-0

gf@avitana.de

ORGANISATION & FINANCES

Carmen Ehlebracht

Phone +49 5221 763 780-0

carmen.ehlebracht@avitana.de



COMMERCIAL AGENCIES GERMANY

PLZ 01, 02, 04-09, 98, 99

Ramona Partzsch

Sumpfmühlenweg 10 | 09633 Halsbrücke OT Hetzdorf
ramona.partzsch@t-online.de | Mobile 0157 51327557

POSTCODE 03, 10-19

Holger Wohlfromm

Weberstr. 14 | 14772 Brandenburg
h.wohlfromm@kuechen-vertrieb.de | Mobile 0172 3014937

PLZ 20-25, 27-29, 30, 312-316, 381, 384, 385

Gerhard Peetz

Wittinger Straße 40 | 29223 Celle
info@hv-peetz.de | Mobile 0173 4325261

PLZ 310, 311, 317, 318, 32, 33, 37, 382, 383, 386-388, 39

Sebastian Kreinberg

Heesfeld 18 | 58553 Halver
kreinbergsebastian@gmail.com | Mobile 0176 80576883

PLZ 40-47, 50-52, 58-59

Frank Kreinberg

58553 Halver | Heesfeld 18
f.kreinberg@t-online.de | Mobile 0170 2960150

POSTCODE 26, 48-49

Erwin Nyhuis

49843 Uelsen, Ginsterweg 19
erwin-nyhuis@t-online.de | Mobile 0172 8086480

Postcode 34-36, 53-57, 60-69 + Luxembourg

Jürgen Groß

35625 Hüttenberg | Westendstr. 8
info@gross-handelsagentur.de | Mobile 0160 90430862

PLZ 70-79, 88-89

Matthias Schönherr

64560 Riedstadt | Heinrich-Heine-Str. 9b
matthias.schoenherr@t-online.de | Mobile 0151 58846367

PLZ 80-87, 90-97

Hans-Peter Ludwig

82256 Fürstenfeldbruck | Maisacher Str. 62a
info@llhandelsagentur.de | Mobile 0171 8010041

TRADE REPRESENTATIONS WORLDWIDE

EXPORT | INDUSTRY

Mares Marketing S.r.l.

I-2100 Varese | Via Malnasca 15

f.jamry@maresgroup.com | Tel. +39 0332 810150

AUSTRIA

imv distribution

PAMMINGER KG A-4813

Altmünster

avitana@pammingerkg.com | Tel. +43 6643425323

SWITZERLAND

CHUCHI ARENA GMBH

Christian Ruth | Karin Jüni

CH - 6340 Baar | Blickensdorferstrasse 19

office@chuchi-arena.ch | Tel. +41 79300 8605

NETHERLANDS | BELGIUM

Harry van den Boogaard

4493AS Kamperland | Veerweg 6

harry49er@gmail.com | Tel. +31 653559118

FRANCE

3H Distribution SAS

Hans Hermann Hagelmann | Arnaud Bour

67270 Durningen | Rue de Fairmont

direction@3h-distribution.fr | Tel: 0033 6 60 51 70 57

CZECH REPUBLIC

Jan Abrham

Vinaricka 171 | 27309 Kladno Svermov

info@plasmafiltry.cz | Tel. +420 602 667 701

vita

aira
vita®

Breathe deeply - in every place

Unventilated offices, crowds in the bistro, sweating athletes in the gym, the "smell of roasting" in the kitchen that lasts for days... Fresh air is often a "scarce commodity" in modern living environments. Yet healthy, clean air not only ensures well-being, but is even vital for body and mind!

Just like on the beach or in the mountains, you can breathe deeply and freely again thanks to the new airVita plasma room air filter. In (almost) any place indoors, because the small, elegant stand-alone device fits perfectly into any room situation - from the doctor's office to the bedroom. Easy to carry or roll, airVita is a mobile air purifier that demonstrably destroys viruses as well as odours, pollen and bacteria. Breathe well!

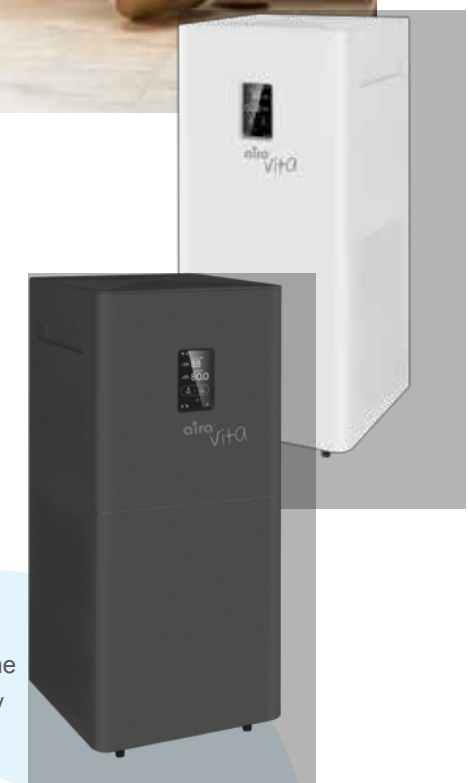


aira
vita® The plasma room air filter!

The innovative plasma technology used in the **airaVita air purifiers** releases positive and negative ions to eliminate harmful particles and unpleasant odours. To ensure continuous purification of the air, the air purifiers have several filter stages that remove pollen, mould, bacteria and viruses from the air. The powerful fan inside the device improves the air flow and ensures thorough cleaning.

of the room air. In addition, the airVita **air purifier** is quiet and does not disturb the operation of other devices or the quiet in the room. Users can easily control the operation and settings of the air purifier. and convenient to adjust, as the units are equipped with intuitive controls. The whole thing is rounded off by the elegant and slim design, which fits perfectly into any room decoration.

- 98 % purified air
- Tested and certified
- Capacity 650 m³
- Room size up to 80 m²
- Timer 1- 6 hours
- Intuitive control via display
- Operation via Smart Life App
- Information system on air quality
- 3 motor speeds, night mode, auto mode
- Available in three colours (white matt/ glossy, anthracite)
- Elegant design
- Low noise level (min 31/ max 68 dB)



atme!

at me!





AVITANA GMBH
Berliner Str. 17 | 32052 Herford | info@avitana.de | www.avitana.de